

GOLETA SANITARY DISTRICT  
BID SPECIFICATION FOR THE FIRESTONE ROAD LIFT STATION  
GOLETA, CA

In this example, the pump station specification was prepared by Penfield & Smith for the Goleta Sanitary District.

The highlights of this specification are:

1. The lift station is specified to be “the latest standard product of a manufacturer regularly engaged and having at least 5 years of experience in the production of pre-packaged submersible pump stations”.
  - This statement ensures that the lift station will be supplied by an experienced package pump station manufacturer.
2. “The equipment supplied under this section shall be supplied or manufactured by a single source manufacturer”.
  - This language ensures that the complete pumping system will not be “broken up” into separate components supplied by multiple manufacturers.
3. “The single source manufacturer must meet or exceed the product specification in Volume II of these contract documents which was prepared using Romtec Utilities system as a guide and example.”
  - This statement ensures that any “or equal” proposals will completely match the pumping system as designed and by Romtec Utilities. The customer (in this case the Goleta Sanitary District) will eventually receive the exact pumping system as specified.

*Note: Volume II is the Romtec Utilities Scope of Supply and Design Submittal.*

4. The description of the scope of work for the “single source manufacturer” is clearly defined, and the site plan with the lift station clearly laid out is attached.
5. This specification requires bidders to provide a submittal of their “equal” system at the time of the bid.
  - This statement allows the City and its reviewing engineer to review any “equal” packages to determine if they completely match the Romtec Utilities scope of supply and services as shown in the Romtec Utilities Scope of Supply and Design Submittal.

*Note: This specification would have been more beneficial if the “equal” submittals were required 10 – 15 days before the bid opening.*



**CONTRACT DOCUMENTS AND  
SPECIFICATIONS FOR  
FIRESTONE ROAD LIFT STATION PROJECT**

**VOLUME 1 OF 2**

PREPARED BY: PENFIELD & SMITH ENGINEERS, INC.

---

David W. Rundle, RCE C48,540

GOLETA SANITARY DISTRICT  
REVIEWED BY:

---

Kamil S. Azoury, P.E.  
General Manager / District Engineer

January 29, 2010



**CONTRACT DOCUMENTS AND  
SPECIFICATIONS FOR  
FIRESTONE ROAD LIFT STATION PROJECT**

**VOLUME 1 OF 2**

Owner: Goleta Sanitary District  
One William Moffett Place  
Goleta, California 93117  
Telephone: (805) 967-4519

Prepared by: Penfield & Smith  
Engineers & Surveyors Inc.  
111 East Victoria Street  
Santa Barbara, California 93102-0098  
Telephone: (805) 963-9532  
W.O. 16441.02

Project Engineer: David W. Rundle  
R.C.E. C 48,540

Date: January 29, 2010



**CONTRACT DOCUMENTS AND  
SPECIFICATIONS FOR  
FIRESTONE ROAD LIFT STATION PROJECT**

**VOLUME 2 OF 2**

Owner: Goleta Sanitary District  
One William Moffett Place  
Goleta, California 93117  
Telephone: (805) 967-4519

Prepared by: Penfield & Smith  
Engineers & Surveyors Inc.  
111 East Victoria Street  
Santa Barbara, California 93102-0098  
Telephone: (805) 963-9532  
W.O. 16441.02

Project Engineer: David W. Rundle  
R.C.E. C 48,540

Date: January 29, 2010

delineations. These temporary stop bars, limit lines and crosswalks shall consist of 6-inch wide 3M 5710 removable tape or approved equal.

Reflective traffic line tape or tabs shall be applied in accordance with the manufacturer's instructions. Temporary delineation shall be the same color as the permanent delineation.

Full compensation for temporary delineation shall be considered as included in the price paid for "Traffic Control, Postings, and Notifications" and no separate payment will be made.

#### 2-14.6 PAYMENT

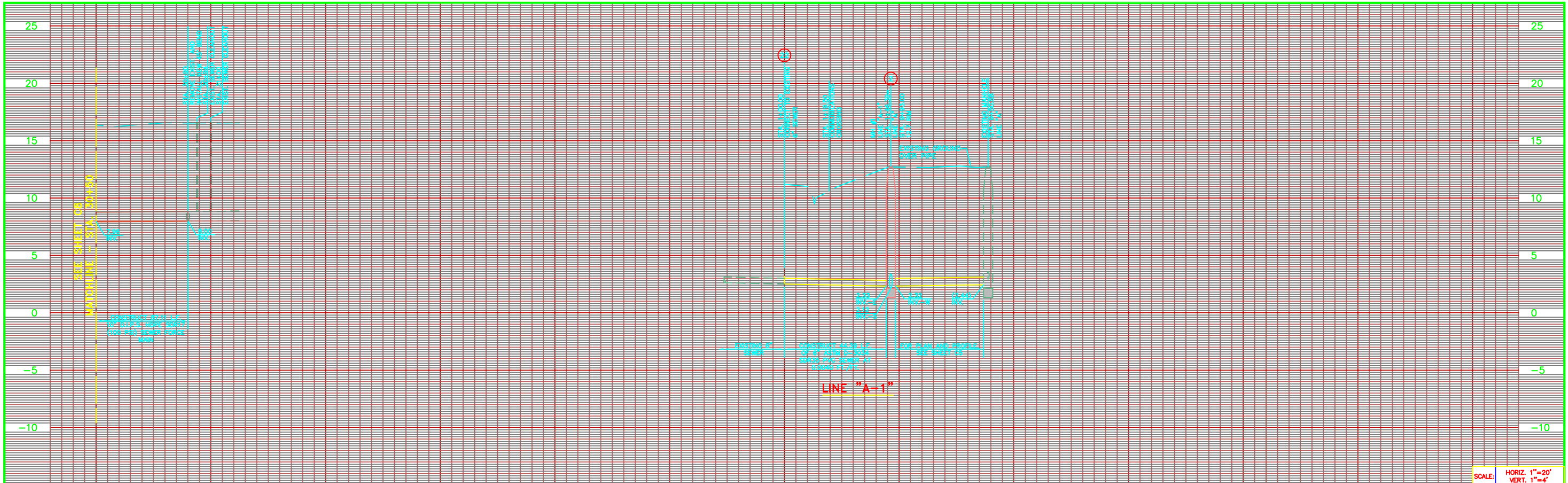
Pavement delineation including removing interfering traffic stripes and markings, cat-tracking new lines, correcting cat-tracked lines as required by the Engineer; painting traffic stripes, pavement markings; furnishing and applying pavement markers and doing other work required to complete temporary and permanent pavement delineation shall be included in the price paid for "Traffic Control, Postings, and Notifications" and no separate payment will be made.

#### 2-15 PRE-PACKAGED LIFT STATION

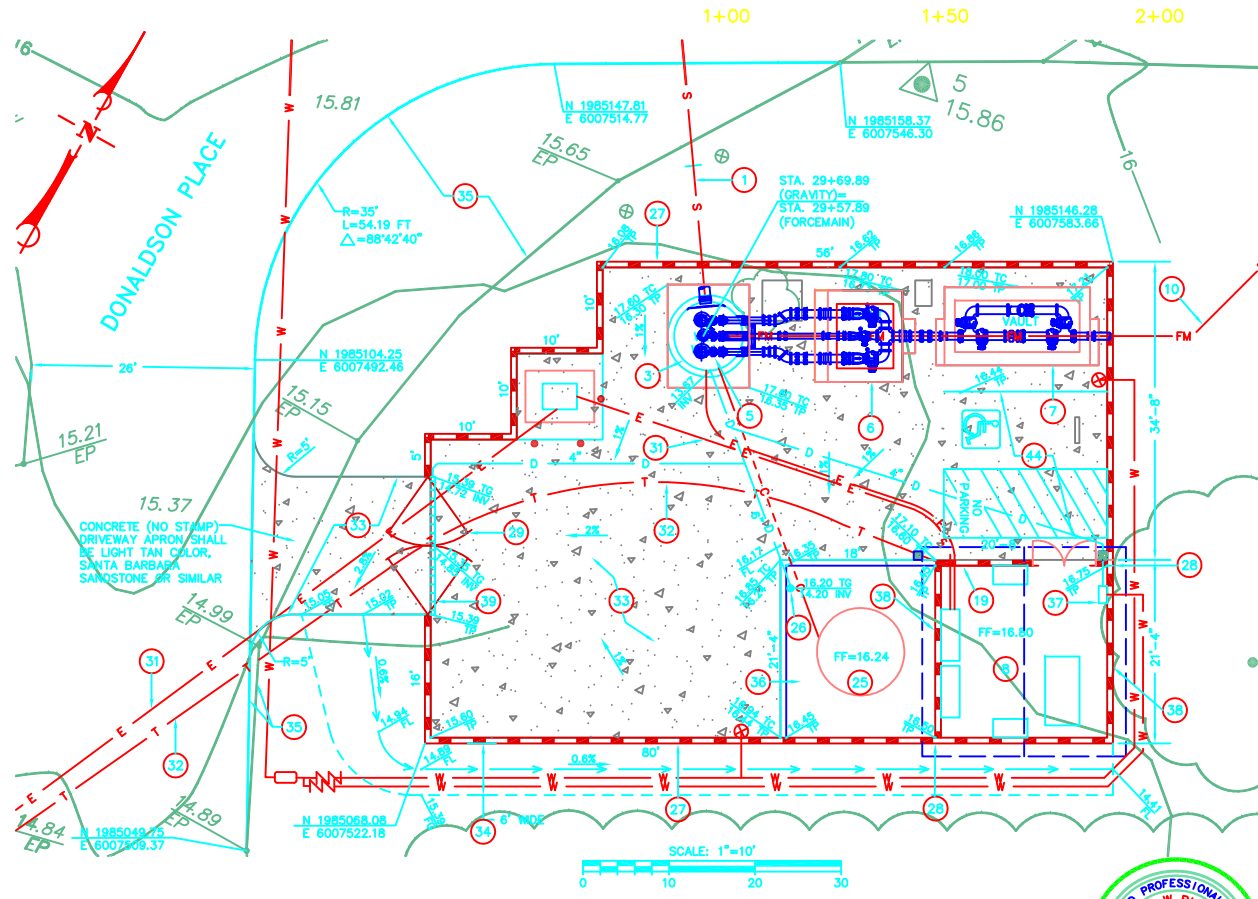
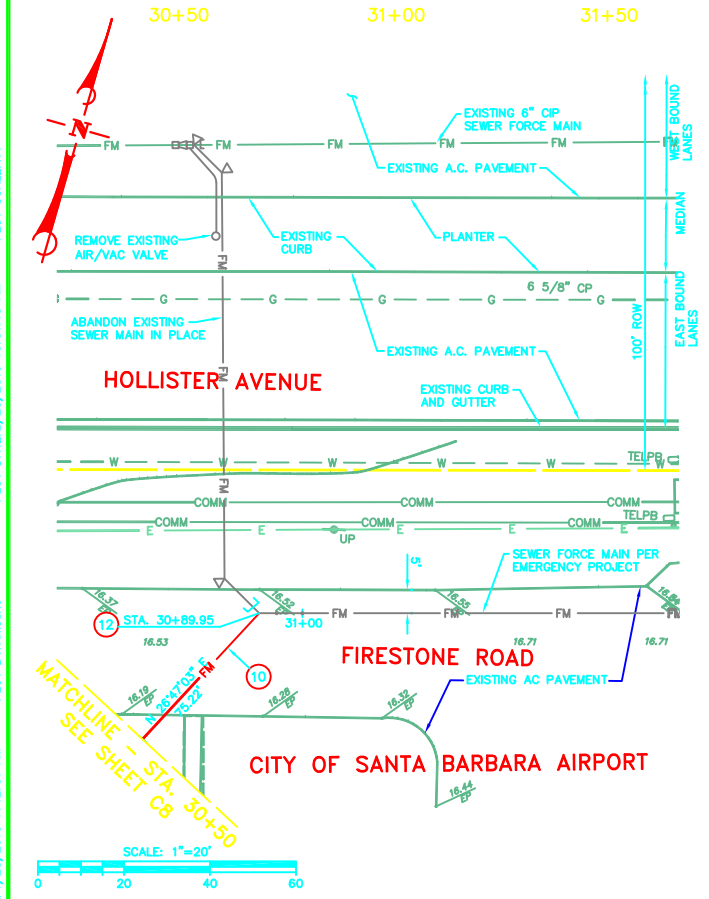
This item shall include all labor, equipment, and materials to construct an eight-foot inside diameter pre-package sewer pump station, valve vault, meter vault, davit crane, odor control, generator, and control and disconnect panel conforming to the details, locations, and inverts shown in these contract documents. The pump station should be the latest standard product of a manufacturer regularly engaged and having at least 5 years of experience in the production of pre-package submersible pump stations.

The equipment supplied under this section shall be supplied or manufactured by a single source manufacturer capable of producing a complete pre-engineered, packaged, submersible, sewage pump station system. The single source manufacturer must meet or exceed the product specification in Volume II of these contract documents which was prepared using Romtec Utilities system as a guide and example. Said Volume II defines the requirements and specifications for the complete pump station facility. Bidders proposing on this project must submit their proposed pre-engineered system by a single manufacturer as an attachment to their bid. The attachment shall be in the form of a submittal in accordance with Paragraph 1-41 of Division 1- General Conditions of these Contract Documents. The required cover letter shall clearly identify the purpose of the submittal, the bidder and title of the Contract Documents that the submittal is an attachment. The submittal shall include verification of the single source manufacturer's experience and references for 5 of the most recent completed pump stations.

The single source manufacturer shall be responsible for all mechanical, structural, electrical and communication components, as well as on site supervision of the start-up services, training, submittals, operation and maintenance manuals, and all warranties related to the materials, equipment and the entire pumping system.



SCALE: HORIZ. 1"=20'  
VERT. 1"=4'



- CONSTRUCTION NOTES**
- CONSTRUCT 15-INCH DIAMETER SDR35 PVC SEWER PER GSD STANDARDS AND GSD TRENCH BACKFILL REQUIREMENTS STANDARD DRAWING NO. 4 SHOWN AS DETAIL "B" ON SHEET C10.
  - CONSTRUCT 60-INCH DIAMETER PRE-CAST CONCRETE MANHOLE PER GSD STANDARD DRAWING NO. 10 SHOWN AS DETAIL "C" ON SHEET C10.
  - INSTALL 8-FOOT DIAMETER, 24.5-FOOT DEEP PRE-FABRICATED CONCRETE WET WELL LINED WITH AMERON T-LOCK AND PEDESTRIAN-RATED HATCH. THE WET WELL SHALL BE SUPPLIED BY ROMTEC UTILITIES (541-496-9678).
  - CONSTRUCT ELECTRICAL SERVICE WITH CIRCUIT PROTECTION CAPABLE OF SUPPLYING 90 HORSEPOWER, 460 VOLT, 60 HERTZ, AND 3 PHASE MOTORS. CONNECT TO PUMP STATION DISCONNECT PANEL.
  - INSTALL (2) TWO 34 HORSEPOWER AND (1) ONE 10 HORSEPOWER ITT FLYGT PUMPS SUPPLIED BY ROMTEC UTILITIES.
  - INSTALL PRE-FABRICATED CONCRETE VALVE VAULT AND PEDESTRIAN-RATED HATCH AND 10-INCH VALVE ASSEMBLY. CONSTRUCT 4-INCH DIAMETER SDR35 PVC SEWER DRAIN LINE FROM VALVE VAULT TO WET WELL, MIN. 2% SLOPE. VALVE VAULT SHALL BE SUPPLIED BY ROMTEC UTILITIES.
  - INSTALL PRE-FABRICATED CONCRETE METER VAULT, PEDESTRIAN-RATED HATCH, AND 10-INCH VALVE ASSEMBLY. METER VAULT SHALL BE SUPPLIED BY ROMTEC UTILITIES.
  - CONSTRUCT BUILDING SUPPLIED BY ROMTEC UTILITIES TO HOUSE GENERATOR, OFFICE, AND PUMP CONTROL PANEL. SEE ELEVATIONS DETAIL "O" ON SHEET C12.
  - CONSTRUCT 10-INCH DIAMETER D.I.P.S. SDR17 (100 PSI) HDPE BUTT FUSED SEWER FORCE MAIN PER GSD STANDARDS AND TRENCH DETAIL "B" ON SHEET C10. FORCE MAIN SHALL MAINTAIN A POSITIVE SLOPE.
  - CUT, CAP, AND ABANDON EXISTING SEWER IN PLACE. REMOVE 45' ELBOW AND INSTALL NEW FLANGED 10-INCH DIAMETER D.I. 45' ELBOW WITH THRUST BLOCK. CONNECT TO EXISTING AND PROPOSED HDPE PIPE.
  - CONSTRUCT 30-AMP OUTLET ON OUTSIDE OF GENERATOR BUILDING.
  - CONSTRUCT 3,150 GALLON POLYETHYLENE, VERTICAL, DOUBLE WALL, FERROUS CHLORIDE STORAGE TANK SUPPLIED BY ROMTEC UTILITIES. TANK SHALL BE LEVEL.
  - CONSTRUCT 9-INCH DIAMETER CONCRETE CATCH BASIN AND 6-INCH DIAMETER SDR35 PVC DRAIN PIPE TO LIFT STATION.
  - CONSTRUCT 8-FOOT HIGH CONCRETE MASONRY BLOCK WALL, LATERAL LOAD= 1200 PA PER TYPICAL PERIMETER SCREEN WALL DETAIL "M" ON SHEET C11.
  - CONSTRUCT EXPANSION JOINT PER DETAIL "J" ON SHEET C11.
  - CONSTRUCT 16-FOOT WIDE ALUMINUM VENETIAN SCREEN SWING GATE WITH 100% VISUAL SCREENING MANUFACTURED BY AMETCO MANUFACTURING CORP. OR EQUAL.
  - CONSTRUCT 5" ELECTRICAL CONDUIT PER ELECTRICAL PLANS.
  - CONSTRUCT 1 1/2-INCH CONDUIT FOR A TELEPHONE LINE.
  - CONSTRUCT CONCRETE PAVEMENT PER SECTION DETAIL "I" ON SHEET C11.
  - CONSTRUCT 6-FOOT WIDE DRAINAGE BIOSWALE PER DETAIL "R", SHEET C12.
  - SAWCUT AND REMOVE EXISTING AC PAVEMENT. SEE LANDSCAPE PLANS FOR MITIGATION.
  - CONSTRUCT CONCRETE TANK SLAB PER DETAIL "N" ON SHEET C11.
  - INSTALL EYE WASH STATION MODEL G1902 BY ENVIRO SAFETY PRODUCTS (559) 651-0919 OR EQUAL AND CONNECT TO 1-INCH WATER LINE AND 4-INCH SDR35 PVC DRAIN LINE.
  - INSTALL 5" ROUNDED RAIN GUTTER. GUTTER SHALL BE 26 GAUGE BONDERIZED AND PRIMED AND PAINTED WITH COLOR BRICKDUST NO. 8742W BY FRAZEE PAINT. GUTTERS SHALL BE BY CALIFORNIA HEATING AND RAINGUTTERS OR EQUAL.
  - CONSTRUCT 6" WIDE TRENCH DRAIN PER DETAIL "U", SHEET C12 AND 6-INCH SDR35 PVC DRAIN LINE.
  - CONSTRUCT VAN ACCESSIBLE PARKING SPACE PER CALDAG 2009 REQUIREMENTS. INSTALL ACCESSIBLE SIGN ON WALL.

NO.	DATE	REVISIONS	APPD.

**Penfield & Smith**  
Engineering - Surveying - Planning  
Construction Management

111 East Victoria Street, Santa Barbara, CA 93101  
Phone: (805) 963-9532 Fax: (805) 966-9801

DESIGN: CEC/DWR CHECKED: \_\_\_\_\_  
PROJECT ENGINEER: DAVID W. RUNDLE DATE: \_\_\_\_\_  
R.C.E. 48540 (EXP. 06/30/10)



**GOLETA SANITARY DISTRICT**  
REVIEWED FOR CONSISTENCY WITH DISTRICT STANDARD SPECIFICATIONS FOR CONSTRUCTION OF SANITARY SEWERS

**FIRESTONE ROAD LIFT STATION PROJECT**  
CITY OF GOLETA SEWER PROFILE  
AND LIFT STATION SITE PLAN  
GOLETA, CALIFORNIA

P&S PROJECT NO. 16441.02  
SHEET C9 OF 17  
PLAN DATE JANUARY 28, 2010

36-PP1 SAVE DATE: 1/28/2010 7:42:01 AM PLOT DATE: 2/25/2010 10:31:15 AM PLOT BY: AHS/RU

DRAWING: ca\goleta\goleta sanitary\goleta res'd 1-27-10\16441u-8-9\16441u-8-9.dwg