

14" TO 20" FORCE MAIN - 5000-10000 GALLONS PER MINUTE

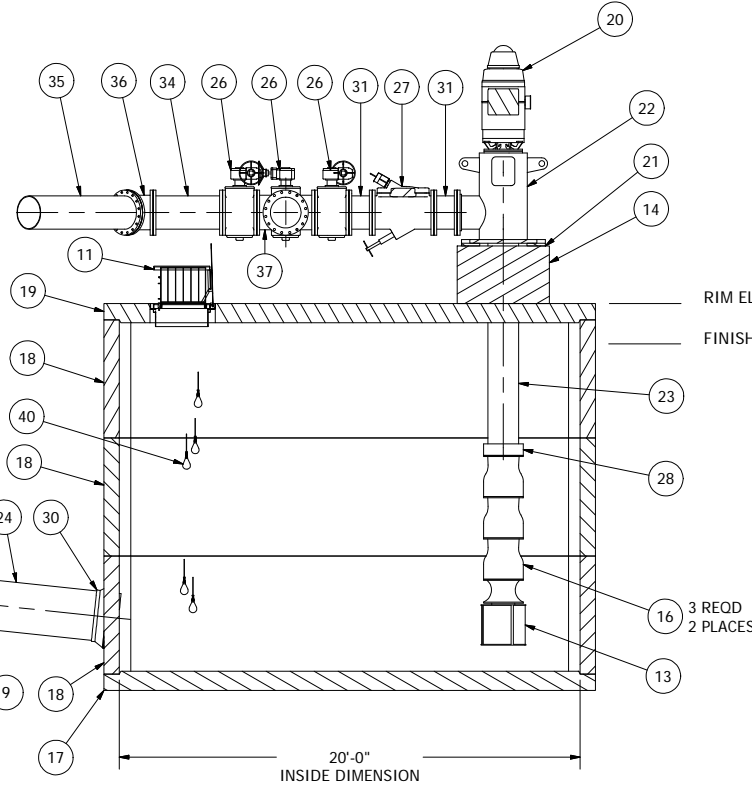
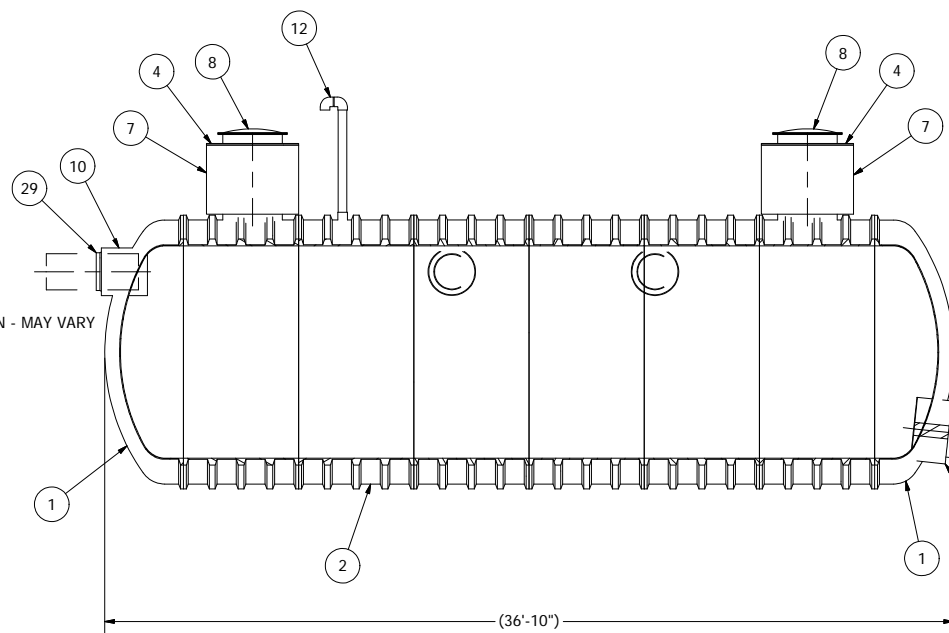
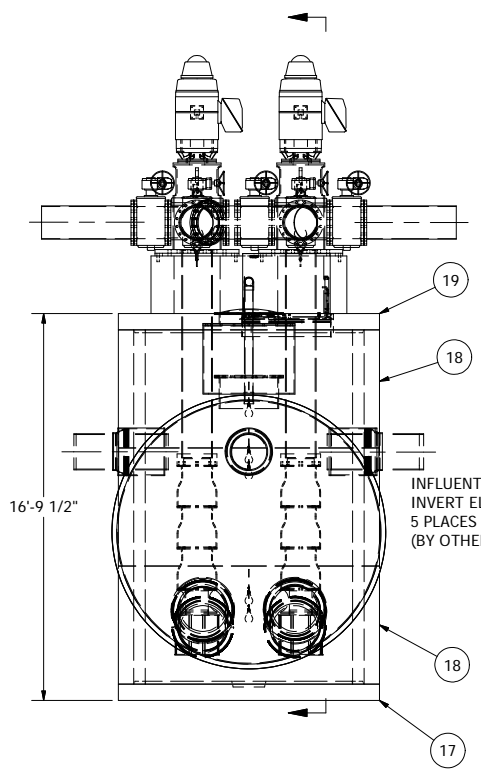
Parts List			
ITEM	QTY	STOCK NUMBER	DESCRIPTION
1	2	11-REF	DOME TOP - 12ft
2	6	11-REF	BARREL - 12ft FIBERGLASS
3	2	11-REF	MANWAY - 30 in
4	2	11-REF	ACCESS SUMP COVER
5	2	11-REF	MANWAY LID
6	1	11-REF	4" NPT PIPE COUPLING
7	2	11-REF	ACCESS SUMP - 48in
8	2	11-REF	WATERTIGHT LID
9	2	11-XXXX	PIPE SLEEVE - 32in
10	5	11-XXXX	PIPE SLEEVE - 24in
11	1	13-5352	HATCH - WW - 5ft PED - 54729 - 27 X 40
12	1	18-5157	4 INCH PVC VENT
13	2	18-XXXX	BASKET STRAINER
14	1	18-XXXX	CONCRETE RISER
15	2	18-XXXX	BELL
16	6	18-XXXX	BOWL
17	1	20-XXXX	VAULT BASE - 1020-LA-10
18	3	22-XXXX	VAULT RISER - 1020-LA-10
19	1	24-XXXX	VAULT TOP
20	2	30-XXXX	MOTOR - 447TPA - 400HP
21	2	31-XXXX	SOLE PLATE - DISCHARGE HEAD
22	2	31-XXXX	DISCHARGE HEAD
23	2	40-XXXX	COLUMN PIPE - 16in
24	2	40-XXXX	24" INLET PIPE
25	6	41-6564	HANDWHEEL
26	6	41-XXXX	VALVE - PLUG - 16in - WITH OP NUT
27	2	41-XXXX	VALVE - SWING CHECK - 16in
28	2	42-XXXX	COUPLER - COLUMN PIPE
29	5	43-5180	KOR-N-SEAL - 24in CORE - 18in PIPE
30	4	43-5196	KOR-N-SEAL - 32in CORE X 24in
31	4	45-XXXX	SPOOL - FLG X FLG - 16in X 12in - DI
32	1	45-XXXX	SPOOL - FLG X FLG - 16in X 5.875in - DI
33	2	45-XXXX	SPOOL - FLG X PE - 16in X 48in - DI
34	1	45-XXXX	SPOOL - FLG X FLG - 16in X 36in - DI
35	1	45-XXXX	SPOOL - FLG X PE - 16in X 72in - DI
36	1	46-XXXX	ELBOW - DI - 16in - 45 DEG
37	1	46-XXXX	CROSS - DI - 16in
38	1	46-XXXX	TEE - DI - 16in
39	21	47-XXXX	GASKET - FLANGE - 16in
40	5	60-6117	MECH SWCH ENM-10 CABLE 43'

DATE	BY	DESCRIPTION	REV
04/14/09	AM	COMPONENT DRAWING	1

VERIFY SCALE
 BAR IS ONE INCH ON ORIGINAL DRAWING
 0
 IF NOT ONE INCH ON THIS SHEET, ADJUST SCALE PROPORTIONALLY
 DSN - AM
 CKD - AM
 DATE - 04/14/09

COMPONENT DRAWING

ROMTEC UTILITIES
 18240 NORTH BANK ROAD
 ROSEBURG, OREGON 97470
 (541) 496-9678
 FAX (541) 496-0804



NOTE: ALL DIMENSIONS AND ELEVATIONS SHOWN ARE NOMINAL DIMENSIONS. IT IS THE RESPONSIBILITY OF THE ON-SITE CONTRACTOR OR ROMTEC UTILITIES CUSTOMER (NOT ROMTEC UTILITIES) TO VERIFY THE ACCURACY OF ANY CRITICAL DIMENSIONS OR ELEVATIONS PRIOR TO SETTING OR INSTALLING ANY EQUIPMENT.

10' X 20' WELL CHAMBER
16" DISCHARGE PIPING
400HP 3-STAGE TURBINE PUMPS
12' DIA FIBERGLASS STORAGE TANK

ALL MATERIALS SHOWN ON THIS SHEET WILL BE SUPPLIED BY ROMTEC UTILITIES AND DELIVERED TO THE SITE AFTER THE HOLE HAS BEEN EXCAVATED AND SHORED. THE CONTRACTOR SHALL SUPPLY A CRANE OF SUFFICIENT SIZE TO LOWER ALL THE CONCRETE PIECES INTO THE HOLE SAFELY. THE CONTRACTOR SHALL INSTALL THE WET WELL (AND VALVE VAULT AND METERING VAULT IF APPLICABLE). ROMTEC UTILITIES WILL PROVIDE A REPRESENTATIVE FOR TECHNICAL ASSISTANCE ON THE DAY OF INSTALLATION TO ANSWER ANY QUESTIONS THAT MAY ARISE. THE CONTRACTOR IS RESPONSIBLE FOR ALL PLUMBING AND ELECTRICAL CONNECTIONS AND INSTALLATION. ITEMS NOTED AS "BY OTHERS" WILL BE PROVIDED AND INSTALLED BY THE CONTRACTOR. ROMTEC UTILITIES WILL NOT INSTALL ANY OF THE COMPONENTS SHOWN ON THIS PAGE.

© 2009 ROMTEC INC. ALL RIGHTS RESERVED. THESE PLANS AND DRAWINGS MAY NOT BE REPRODUCED, ADAPTED, OR FURTHER DISTRIBUTED, AND NO COMPONENTS MAY BE CONSTRUCTED FROM THESE PLANS, WITHOUT WRITTEN PERMISSION OF ROMTEC, INC.

ROMTEC Utilities, Inc.
X-LARGE FLOW
LINE SHAFT TURBINE SYSTEM

SHEET
1 OF 1
 JOB NUMBER
RMTC 0000