

Parts List			
ITEM	QTY	STOCK NUMBER	DESCRIPTION
1	1	13-6212	HATCH - WW - 4ft PED - 51364 - 25 X 32
2	1	18-XXXX	CONCRETE RISER
3	2	18-XXXX	BASKET STRAINER
4	2	18-XXXX	BELL
5	8	18-XXXX	BOWL
6	1	20-5926	BASE - VV - 816
7	1	24-XXXX	TOP SLAB - VV - 816 - PED - 5ft 9in TALL
8	4	25-6530	STAND; 4" PIPE SUPPORT S89 FLG
9	1	25-XXXX	LADDER - 13ft
10	2	30-XXXX	MOTOR - 326TP - 50HP
11	2	31-XXXX	DISCHARGE HEAD
12	2	31-XXXX	SOLE PLATE - DISCHARGE HEAD
13	2	32-XXXX	MOTOR SHAFT
14	1	40-5089	NIPPLE - GALV - 2in SCH40 X CLOSE
15	1	40-6245	NIPPLE - GALV - 2in SCH40 X 6in
16	2	40-XXXX	COLUMN PIPE - 10in
17	1	41-5041	VALVE - BALL - 2in BRASS - 1-4 TURN
18	4	41-5396	VALVE - PLUG - 10in - GEAR OP
19	1	41-XXXX	AIR RELEASE VALVE
20	2	41-XXXX	VALVE - SWING CHECK - 10in
21	2	42-XXXX	COUPLER - COLUMN PIPE
22	1	44-XXXX	FLANGE - DI - 10in - WITH 2in TAP
23	2	45-5208	SPOOL - FLG X FLG - 10in X 12in - DI
24	2	45-5393	SPOOL - FLG X FLG - 10in X 6in - DI
25	1	45-XXXX	SPOOL - FLG X FLG - 10in X 25.75in - DI
26	2	45-XXXX	SPOOL - FLG X PE - 10in X 60in - DI
27	3	46-5204	TEE - DI - 10in - FLG X FLG
28	18	47-5252	GASKET - FLANGE - 10in X 1/8in
29	5	60-6117	MECH SWCH ENM-10 CABLE 43'
31	1	43-5193	KOR-N-SEAL - 16in CORE - 12in PIPE

REV	DESCRIPTION	DATE	BY	AM
1	COMPONENT DRAWING	04/09/09		

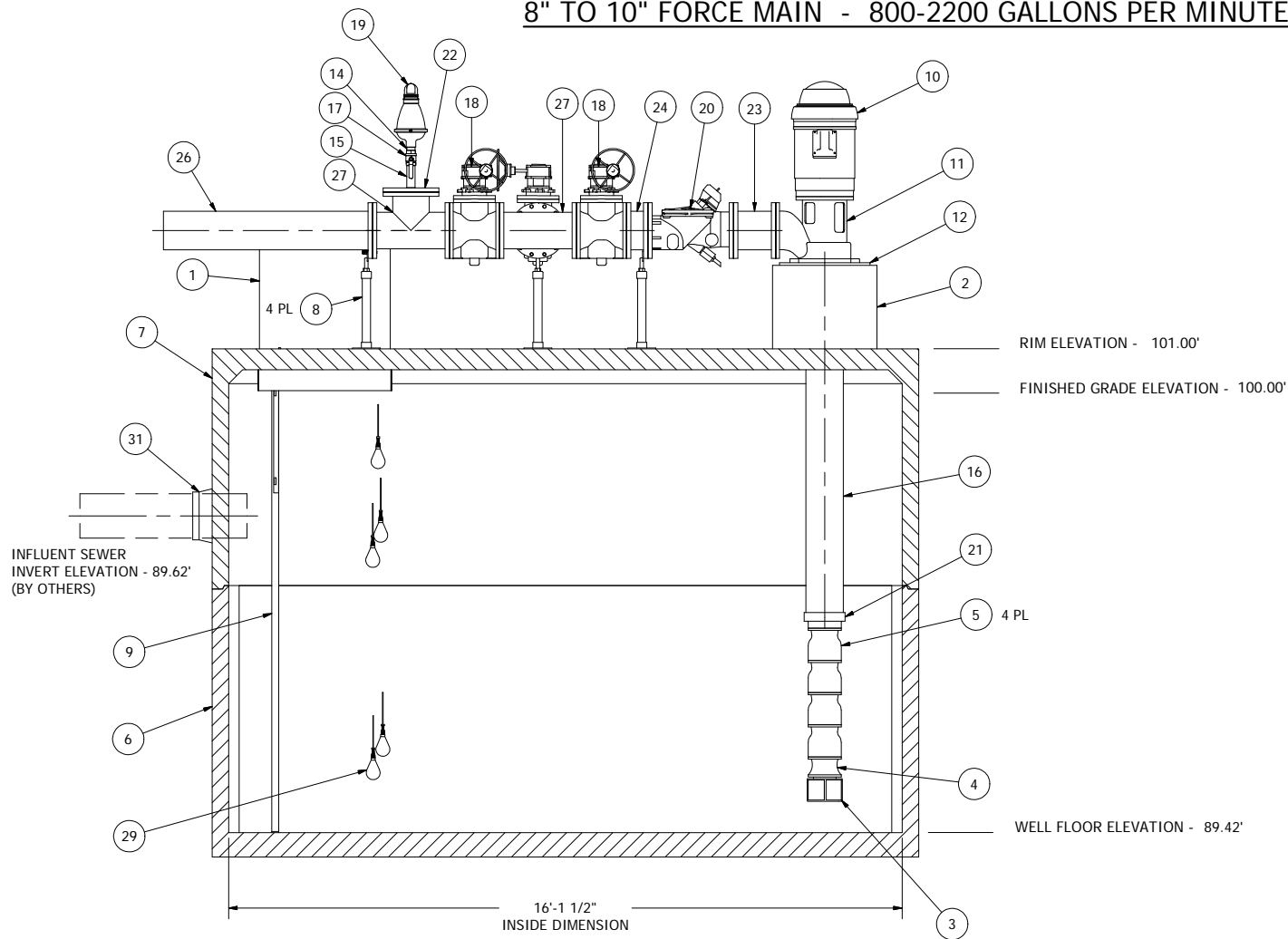
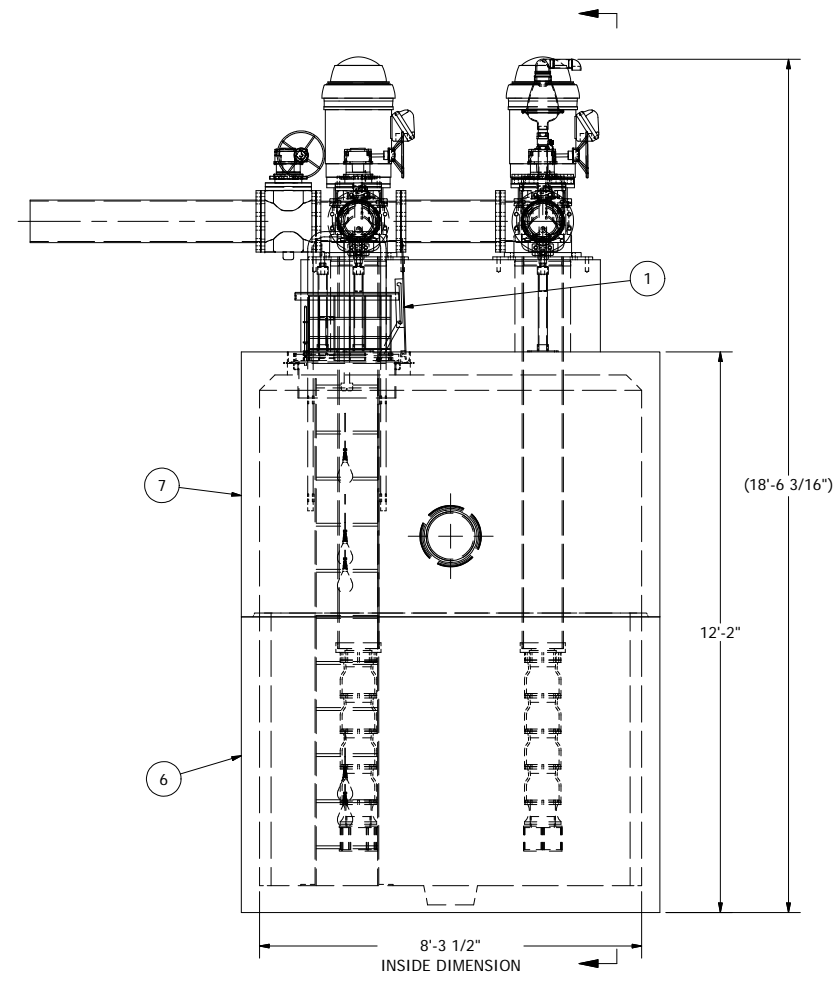
VERIFY SCALE  
BAR IS ONE INCH ON  
ORIGINAL DRAWING  
0  
IF NOT ONE INCH ON  
THIS SHEET, ADJUST  
SCALE PROPORTIONALLY

DSN - AM  
CKD -  
DATE - 04/09/09

**COMPONENT DRAWING**

**ROMTEC UTILITIES**  
18240 NORTH BANK ROAD  
ROSEBURG, OREGON 97470  
(541) 496-9678  
FAX (541) 496-0804

**8" TO 10" FORCE MAIN - 800-2200 GALLONS PER MINUTE**



NOTE: ALL DIMENSIONS AND ELEVATIONS SHOWN ARE NOMINAL DIMENSIONS. IT IS THE RESPONSIBILITY OF THE ON-SITE CONTRACTOR OR ROMTEC UTILITIES CUSTOMER (NOT ROMTEC UTILITIES) TO VERIFY THE ACCURACY OF ANY CRITICAL DIMENSIONS OR ELEVATIONS PRIOR TO SETTING OR INSTALLING ANY EQUIPMENT.

**8' X 16' WELL CHAMBER  
10'DISCHARGE PIPING  
50HP 4-STAGE TURBINE PUMPS**

ALL MATERIALS SHOWN ON THIS SHEET WILL BE SUPPLIED BY ROMTEC UTILITIES AND DELIVERED TO THE SITE AFTER THE HOLE HAS BEEN EXCAVATED AND SHORED. THE CONTRACTOR SHALL SUPPLY A CRANE OF SUFFICIENT SIZE TO LOWER ALL THE CONCRETE PIECES INTO THE HOLE SAFELY. THE CONTRACTOR SHALL INSTALL THE WET WELL (AND VALVE VAULT AND METERING VAULT IF APPLICABLE). ROMTEC UTILITIES WILL PROVIDE A REPRESENTATIVE FOR TECHNICAL ASSISTANCE ON THE DAY OF INSTALLATION TO ANSWER ANY QUESTIONS THAT MAY ARISE. THE CONTRACTOR IS RESPONSIBLE FOR ALL PLUMBING AND ELECTRICAL CONNECTIONS AND INSTALLATION. ITEMS NOTED AS "BY OTHERS" WILL BE PROVIDED AND INSTALLED BY THE CONTRACTOR. ROMTEC UTILITIES WILL NOT INSTALL ANY OF THE COMPONENTS SHOWN ON THIS PAGE.

© 2009 ROMTEC INC. ALL RIGHTS RESERVED. THESE PLANS AND DRAWINGS MAY NOT BE REPRODUCED, ADAPTED, OR FURTHER DISTRIBUTED, AND NO COMPONENTS MAY BE CONSTRUCTED FROM THESE PLANS, WITHOUT WRITTEN PERMISSION OF ROMTEC, INC.

ROMTEC Utilities, Inc.

**MEDIUM FLOW  
LINE SHAFT TURBINE SYSTEM**

SHEET  
**1 OF 1**

JOB NUMBER  
**RMTC  
0000**