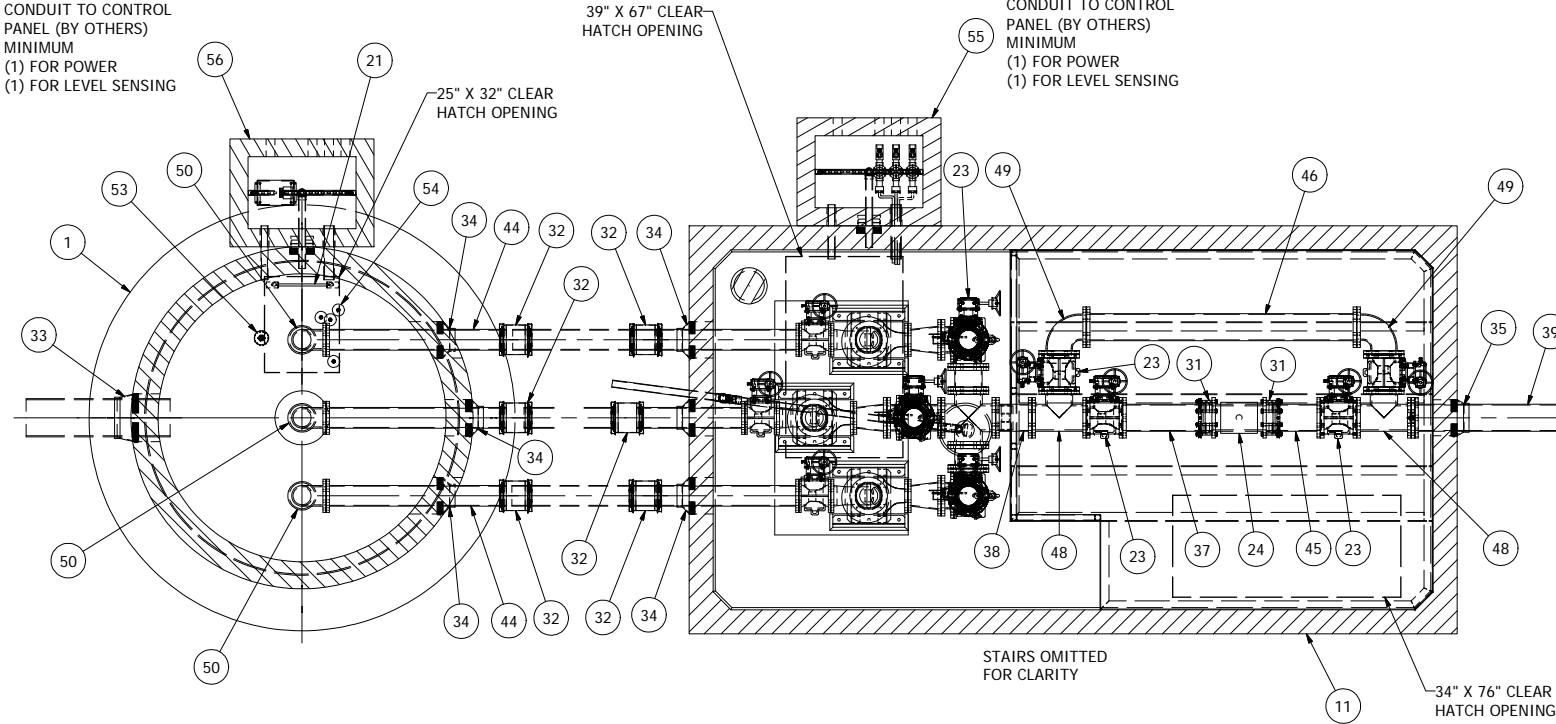
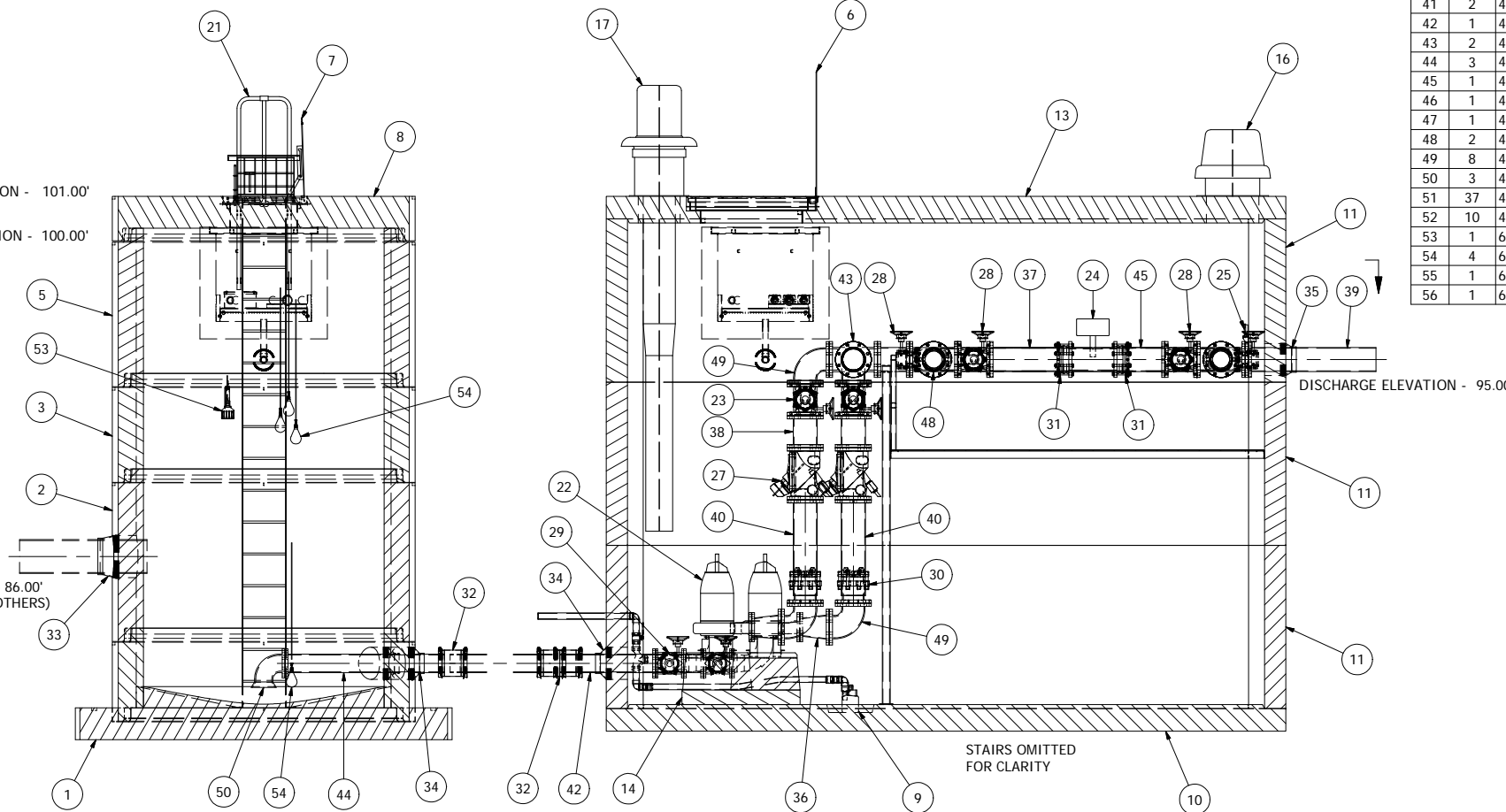
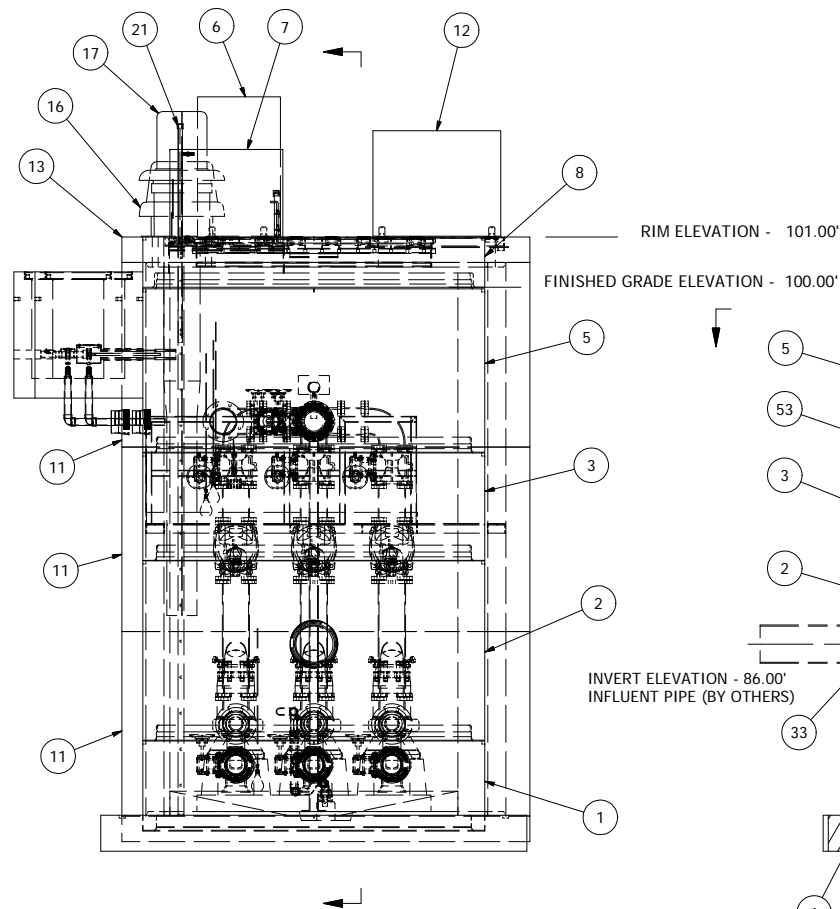


NOTE:
CONDUIT TO CONTROL
PANEL (BY OTHERS)
MINIMUM
(1) FOR POWER
(1) FOR LEVEL SENSING



NOTE:
CONDUIT TO CONTROL
PANEL (BY OTHERS)
MINIMUM
(1) FOR POWER
(1) FOR LEVEL SENSING

12" TO 18" FORCE MAIN - 1000 TO 5000 GALLONS PER MINUTE



NOTE: ALL DIMENSIONS AND ELEVATIONS SHOWN ARE NOMINAL DIMENSIONS. IT IS THE RESPONSIBILITY OF THE ON-SITE CONTRACTOR OR ROMTEC UTILITIES CUSTOMER (NOT ROMTEC UTILITIES) TO VERIFY THE ACCURACY OF ANY CRITICAL DIMENSIONS OR ELEVATIONS PRIOR TO SETTING OR INSTALLING ANY EQUIPMENT.

**10' DIAMETER WET WELL
8" DISCHARGE PIPING
45HP PUMPS
10' X 20' DRY VAULT**

ALL MATERIALS SHOWN ON THIS SHEET WILL BE SUPPLIED BY ROMTEC UTILITIES AND DELIVERED TO THE SITE AFTER THE HOLE HAS BEEN EXCAVATED AND SHORED. THE CONTRACTOR SHALL SUPPLY A CRANE OF SUFFICIENT SIZE TO LOWER ALL THE CONCRETE PIECES INTO THE HOLE SAFELY. THE CONTRACTOR SHALL INSTALL THE WET WELL (AND VALVE VAULT AND METERING VAULT IF APPLICABLE). ROMTEC UTILITIES WILL PROVIDE A REPRESENTATIVE FOR TECHNICAL ASSISTANCE ON THE DAY OF INSTALLATION TO ANSWER ANY QUESTIONS THAT MAY ARISE. THE CONTRACTOR IS RESPONSIBLE FOR ALL PLUMBING AND ELECTRICAL CONNECTIONS AND INSTALLATION. ITEMS NOTED AS "BY OTHERS" WILL BE PROVIDED AND INSTALLED BY THE CONTRACTOR. ROMTEC UTILITIES WILL NOT INSTALL ANY OF THE COMPONENTS SHOWN ON THIS PAGE.

Parts List			
ITEM	QTY	STOCK NUMBER	DESCRIPTION
1	1	10-6482	BASE - WW - 8ft - FLAT BASE - 142in DIA
2	1	12-6574	BARREL - 8ft DIA X 5ft H
3	1	12-6576	BARREL - 8ft DIA X 3ft H
4	1	12-XXXX	GROUT RING
5	1	12-XXXX	BARREL - 8ft DIA X 4.56ft H
6	1	13-5083	HATCH - WW - 8ft PED TRI - NO V/T - FLET-34X76AOSHMOD
7	1	13-6212	HATCH - WW - 4ft PED - 51364 - 25 X 32
8	1	14-XXXX	TOP SLAB
9	1	18-XXXX	SUMP PUMP ASSEMBLY
10	1	20-XXXX	VAULT BASE - 1020-LA-10
11	3	22-XXXX	VAULT RISER - 1020-LA-10
12	1	23-6508	HATCH - VV - 577 - PED - FDRND-0-39X67
13	1	24-XXXX	VAULT TOP
14	1	25-XXXX	CONCRETE BASE
15	1	25-XXXX	PLATFORM
16	1	25-XXXX	EXHAUST FAN
17	1	25-XXXX	INTAKE FAN
18	1	25-XXXX	LOWER STAIRCASE
19	1	25-XXXX	UPPER STAIRCASE
20	1	25-XXXX	PIPE STAND
21	1	25-XXXX	LADDER - 16ft
22	3	30-XXXX	45HP PUMPS
23	7	41-5233	VALVE - PLUG - 8in - GEAR OP - FBEC
24	1	41-5375	FLOW TUBE - 8in - FOXBORO
25	1	41-6092	PRESSURE GAUGE - 3.5in 60PSI
26	1	41-6137	ISO-RING - 8in
27	3	41-6157	VALVE - SWING CHECK - 8in
28	10	41-6564	HANDWHEEL - 8in
29	3	41-6567	VALVE - PLUG - 6in - WITH OP NUT
30	3	42-5074	COUPLING - ROMAC - RFCA - 8in FBEC
31	2	42-5236	MEGAFLANGE ADAPTER - 8in - SERIES 2100
32	6	42-6075	COUPLING - HYMAX 2000 - 6in
33	1	43-5193	KOR-N-SEAL - 16in CORE - 12in PIPE
34	6	43-6113	KOR-N-SEAL - 12in CORE - 6in PIPE
35	1	43-6135	KOR-N-SEAL - 12in CORE - 8in PIPE
36	3	44-XXXX	REDUCER - DI - CONCENTRIC - 8in X 6in
37	1	45-5055	SPOOL - FLG X PE - 8in X 30in - DI
38	4	45-5056	SPOOL; 8" X 12" DI FLG X FLG
39	1	45-5212	SPOOL - FLG X PE X 8in X 48in - DI
40	3	45-5240	SPOOL - FLG X PE - 8in X 36in - DI
41	2	45-6510	SPOOL - FLG X PE - 6in X 48in - DI
42	1	45-6538	SPOOL - FLG X PE - 6in X 36in - DI
43	2	45-XXXX	SPOOL - FLG X FLG - 8in" X 7.75in" - DI
44	3	45-XXXX	SPOOL - FLG X PE - 6in X 60in - DI
45	1	45-XXXX	SPOOL - FLG X PE - 8in X 18in - DI
46	1	45-XXXX	SPOOL; 8" X 90" DI FLG X FLG
47	1	46-5172	CROSS - DI - 8in
48	2	46-5234	TEE - DI - 8in - FLG X FLG
49	8	46-5281	ELBOW - DI - 8in - 90 DEG - FLG X FLG
50	3	46-XXXX	ELBOW - DI - 6in - 90 DEG - FLG X FLARE
51	37	47-5222	GASKET - FLANGE - 8in X 1/8in
52	10	47-6547	GASKET - FLANGE - 6in X 1/8in
53	1	60-5044	ULTRASONIC TRANSDUCER - XPS-15
54	4	60-6117	MECH SWCH ENM-10 CABLE 43'
55	1	61-6496	JUNCTION BOX ASSY - PUMP CONTROLS
56	1	61-6496	JUNCTION BOX ASSY - LEVEL CONTROLS

REV	DATE	DESCRIPTION	BY
1	03/17/09	COMPONENT DRAWING	

VERIFY SCALE
BAR IS ONE INCH ON ORIGINAL DRAWING
IF NOT ONE INCH ON THIS SHEET, ADJUST SCALE ACCORDINGLY

DATE - 03/17/09
CKD -
DRN - AM

COMPONENT DRAWING

ROMTEC UTILITIES
18240 NORTH BANK ROAD
ROSEBURG, OREGON 97470
(541) 496-9678
FAX (541) 496-0804

ROMTEC Utilities, Inc.
**X-LARGE FLOW
WET / DRY SYSTEM**