

CUSTOM INDUSTRIAL

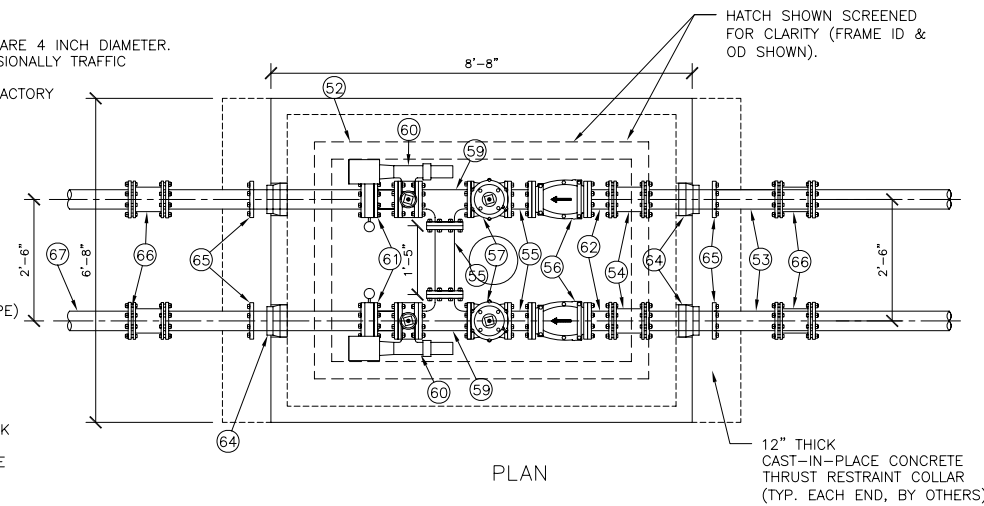
DUPLEX-6' X 13' WET WELL & VALVE VAULT

WET WELL, VALVE VAULT, ELECTRICAL CONTROLS AND SCADA

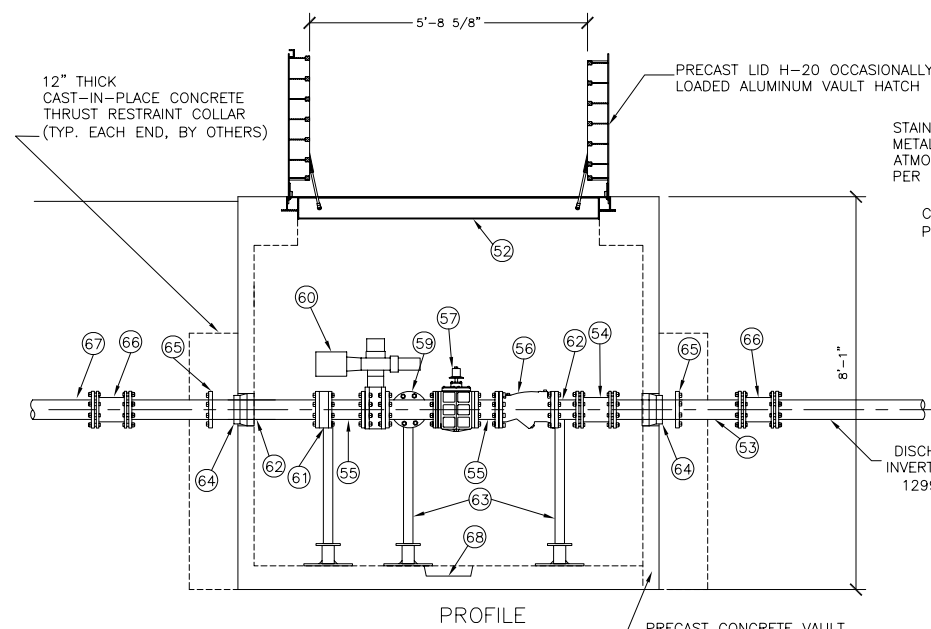
NOTE: WETWELL TOP SLABS ARE H-20 OCCASIONAL TRAFFIC RATED.

- VAULT DESIGN NOTES:
1. ALL PIPING & VALVES WITHIN VAULT ARE 4 INCH DIAMETER.
 2. HATCH DESIGN LOADS: H-20 OCCASIONAL TRAFFIC LOADED.
 3. VALVES AND VAULT PIPING SYSTEM FACTORY TESTED AFTER ASSEMBLY.

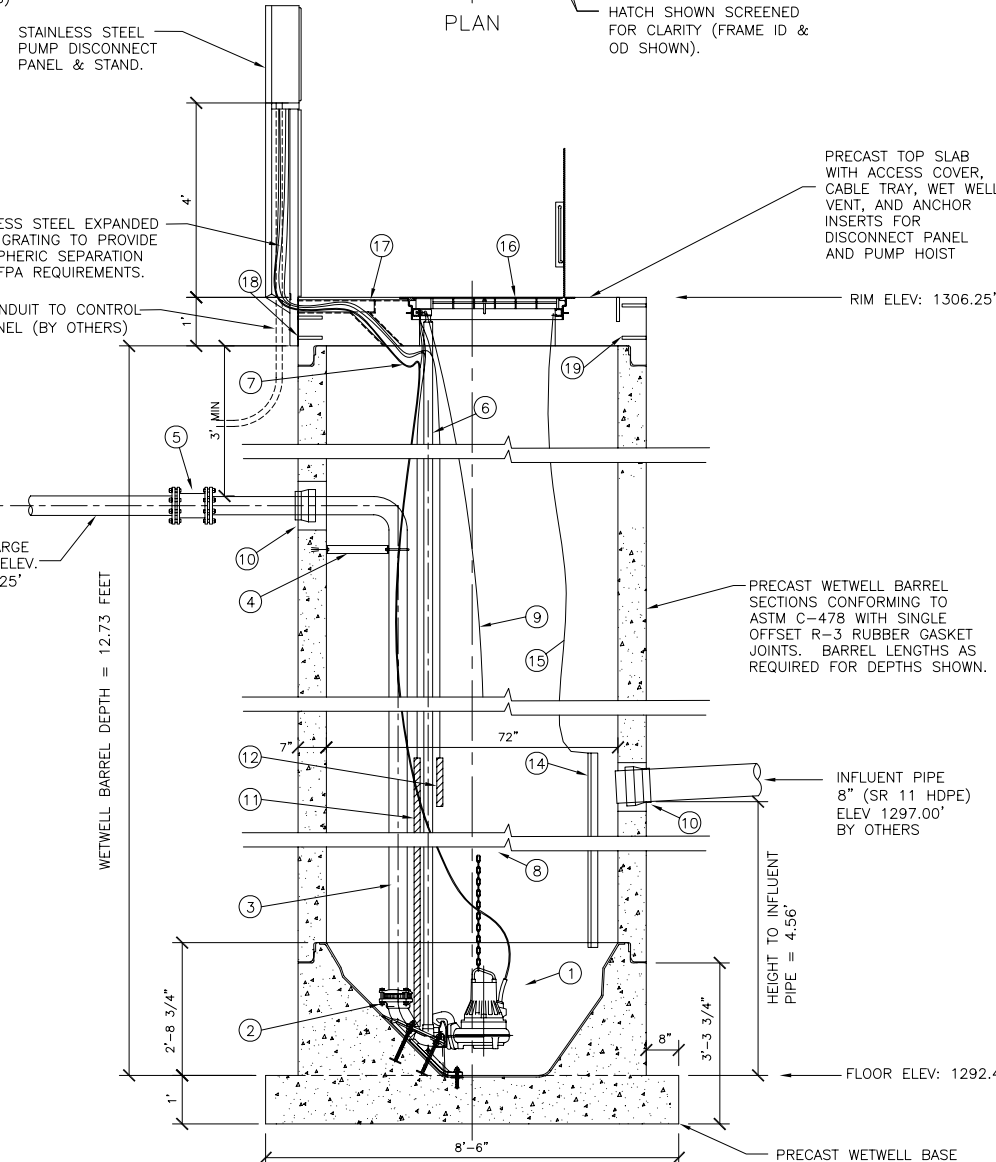
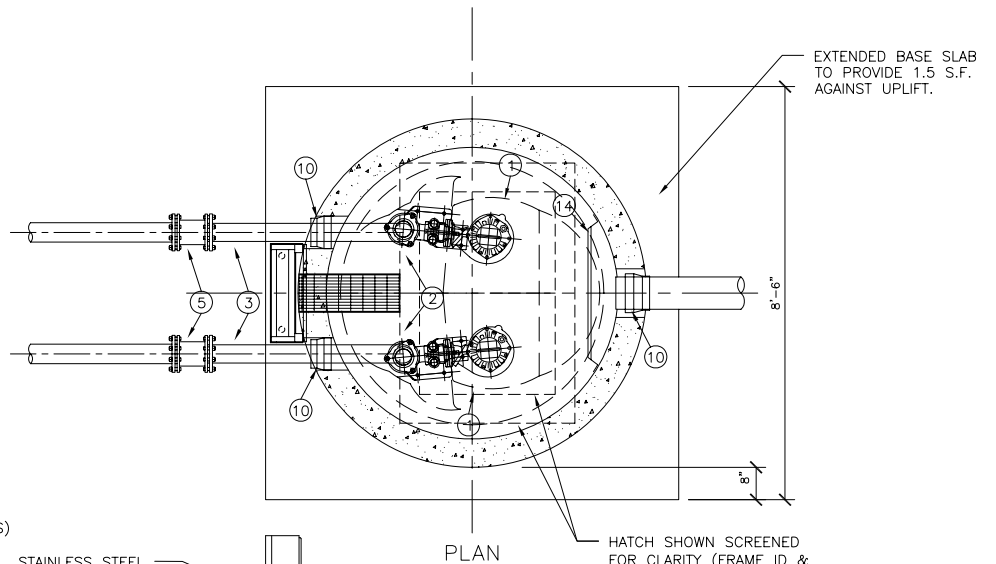
- (51) NOT USED.
- (52) FLYGT ALUMINUM ACCESS HATCH PRECAST INTO VAULT TOP SLAB. FDRND-50X74HD
- (53) 4" CL 52 DI PIPE SPOOL (PE x PE)
- (54) 4" DI SLEEVE COUPLING, DI TO DI PIPE
- (55) 4" DI PIPE SPOOL, (FLG. X FLG.)
- (56) 4" FLANGED DI BODY SWING CHECK VALVE, VALMATIC MODEL 504A OR APCO MODEL 104P3. PROVIDE ONE WITH OPTIONAL BACKFLOW DEVICE.
- (57) 4" ECCENTRIC PLUG VALVE W/ 2" SQUARE NUT OPERATOR, VALMATIC MODEL 5804RN OR DEZURIK MODEL PEC4.
- (58) NOT USED.
- (59) 4" DI TEE, (FLG X FLG)
- (60) DEZURIK BUTTERFLY VALVE AIR CYLINDER ACTUATED.
- (61) 4" WAFER STYLE DIAPHRAM PRESSURE SENSOR, RED VALVE SERIES 40.
- (62) 4" DI PIPE SPOOL (FLG x PE)
- (63) ADJUSTABLE PIPE SUPPORT, STANDON (TYP OF 6).
- (64) 4" VAULT SEAL, KOR-N-SEAL (TYP OF 4).
- (65) 4" RETAINER GLAND CENTERED IN THRUST COLLAR, MEGALUG (TYP OF 4).
- (66) SLEEVE COUPLING, DI VAULT PIPING (BY OTHERS)
- (67) FORCE MAIN (BY OTHERS).
- (68) PRECAST VAULT SUMP FOR GRAVITY DRAIN TO APPROVED POINT.
- (69) NOT USED.



NOTE: VAULT TOP SLABS ARE H-20 OCCASIONALLY TRAFFIC RATED.



4" VALVE VAULT
SCALE: 1/2" = 1'-0"



6' DIAMETER WETWELL
SCALE: 1/2" = 1'-0"

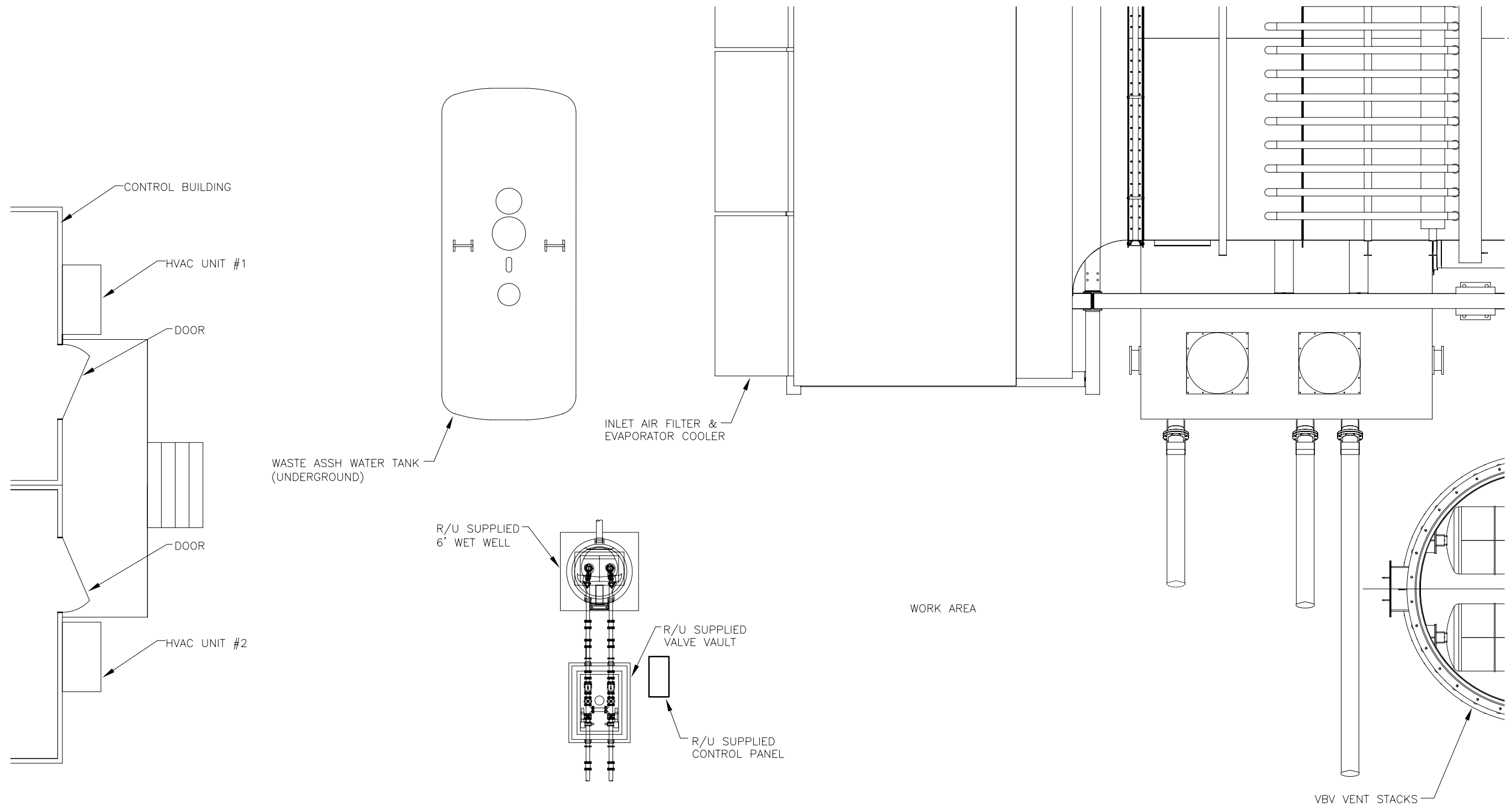
- (1) SUBMERSIBLE NON-CLOG SEWAGE PUMPS, FLYGT MODEL NP-3085 (462). PROVIDE ONE PUMP WITH MIX FLUSH VALVE.
- (2) 4-INCH FLYGT DISCHARGE ELBOW.
- (3) STAINLESS STEEL DISCHARGE PIPING (SCHD 40) FACTORY TESTED. PROVIDE ALL PIPE PENETRATION(S) WITH RUBBER BOOTS (KOR-N-SEAL).
- (4) STAINLESS STEEL DISCHARGE PIPE ANCHOR BRACKET.
- (5) DI SLEEVE COUPLING, STAINLESS STEEL TO DI PIPING
- (6) TWO 2-INCH SCHEDULE 40 STAINLESS STEEL GUIDE BARS FOR EACH PUMP (FULL HEIGHT). ATTACH TO HATCH UNI-STRUT WITH FLYGT UPPER GUIDE BAR BRACKET.
- (7) PUMP POWER CABLE WITH QUICK CONNECT COUPLING AT PUMP DISCONNECT PANEL. PROVIDE EACH CABLE WITH A STAINLESS STEEL BASKET CABLE GRIP ATTACHED TO HOOK ON UPPER GUIDE BAR BRACKET.
- (8) STAINLESS STEEL CHAIN SLING FOR PUMP RETRIEVAL USING FLYGT GRIP-EYE. ATTACH TO PUMP LIFTING HANDLE.
- (9) 1/4" STAINLESS STEEL CHAIN (S-4 ATTACHED TO PUMP HANDLE. PROVIDE CHAIN WITH 3/8" & 1/2" STAINLESS STEEL BOW SHACKLE WITH SCREW PIN ATTACHED TO PUMP HANDLE. ATTACH UPPER END OF CHAIN TO HOOK ON UPPER GUIDE BAR BRACKET.
- (10) WETWELL SEAL, KOR-N-SEAL.
- (11) PUMP LIQUID LEVEL CONTROL PROBE, FLYGT MULTI-TRODE PROBE. PROBE LENGTH = 5 FEET (1.5 METERS) NUMBER OF SENSORS = 10 SENSOR SPACING = 6-INCHES. PROVIDE MULTITRODE MTK-1 PROBE MOUNTING BRACKET MOUNTED TO HATCH UNI-STRUT.
- (12) REDUNDANT CONTROL SYSTEM. CUSTOM MULTI-TRODE 3 SENSOR PROBE FOR REDUNDANT HIGH LEVEL ALARM AND PUMP START COMMAND.
- (13) NOT USED.
- (14) HDPE INFLUENT DEFLECTOR WITH FULL SIZE INSPECTION HOLE AND GUILLOTINE COVER.
- (15) 1/8" STAINLESS STEEL LIFTING CABLE FOR INFLUENT DEFLECTOR INSPECTION HOLE COVER. PERMANENTLY ATTACH UPPER END OF CABLE TO HATCH UNI-STRUT.
- (16) FLYGT ALUM. ACCESS HATCH PRECAST INTO WETWELL TOP SLAB. PROVIDE W/ SAFE-HATCH SAFETY GRATE BY FLYGT.(FLED-HD-33.5X40 AOSH)
- (17) ALUMINUM CABLE HATCH AND WETWELL VENT PRECAST INTO WETWELL TOP SLAB. PROVIDE WITH STAINLESS STEEL HINGES AND SLAM-LOCK.
- (18) STAINLESS STEEL ANCHOR INSERTS FOR PUMP DISCONNECT PANEL.
- (19) STAINLESS STEEL ANCHOR INSERTS FOR PUMP DAVIT CRANE BASE.
- (20) NOT USED.

| | | | | |
|--|-----|------|-------------|----|
| VERIFY SCALE BAR IS ONE INCH ON ORIGINAL DRAWING IF NOT ONE INCH ON SCALES ACCORDINGLY | NO. | DATE | DESCRIPTION | BY |
| 0 | | | | |
| ROMTEC UTILITIES 18240 NORTH BANK ROAD ROSEBURG, OR 97470 (541)-496-9678 FAX (541)-496-0804 | | | | |
| ROMTEC UTILITIES 6' WETWELL & VAULT 4" DISCHARGE & VAULT | | | | |
| SHEET 1 OF JOB NUMBER RMT0000 | | | | |

CUSTOM INDUSTRIAL

DUPLEX-6' X 13' WET WELL & VALVE VAULT

WET WELL, VALVE VAULT, ELECTRICAL CONTROLS AND SCADA



VERIFY SCALE
 BASE IS ONE INCH ON ORIGINAL DRAWING
 0 IF NOT ONE INCH ON SCALE ACCORDINGLY
 DSN.
 DRN.
 CKD.
 DATE:

| NO. | DATE | DESCRIPTION | BY |
|-----|------|-------------|----|
| | | | |
| | | | |
| | | | |
| | | | |
| | | | |
| | | | |
| | | | |
| | | | |
| | | | |

ROMTEC UTILITIES
 18240 NORTH BANK ROAD
 ROSEBURG, OR 97470
 (541)-496-9678
 FAX (541)-496-0804

ROMTEC UTILITIES
SITE PLAN

SHEET
 1 OF
 JOB NUMBER
 RMTc 0000