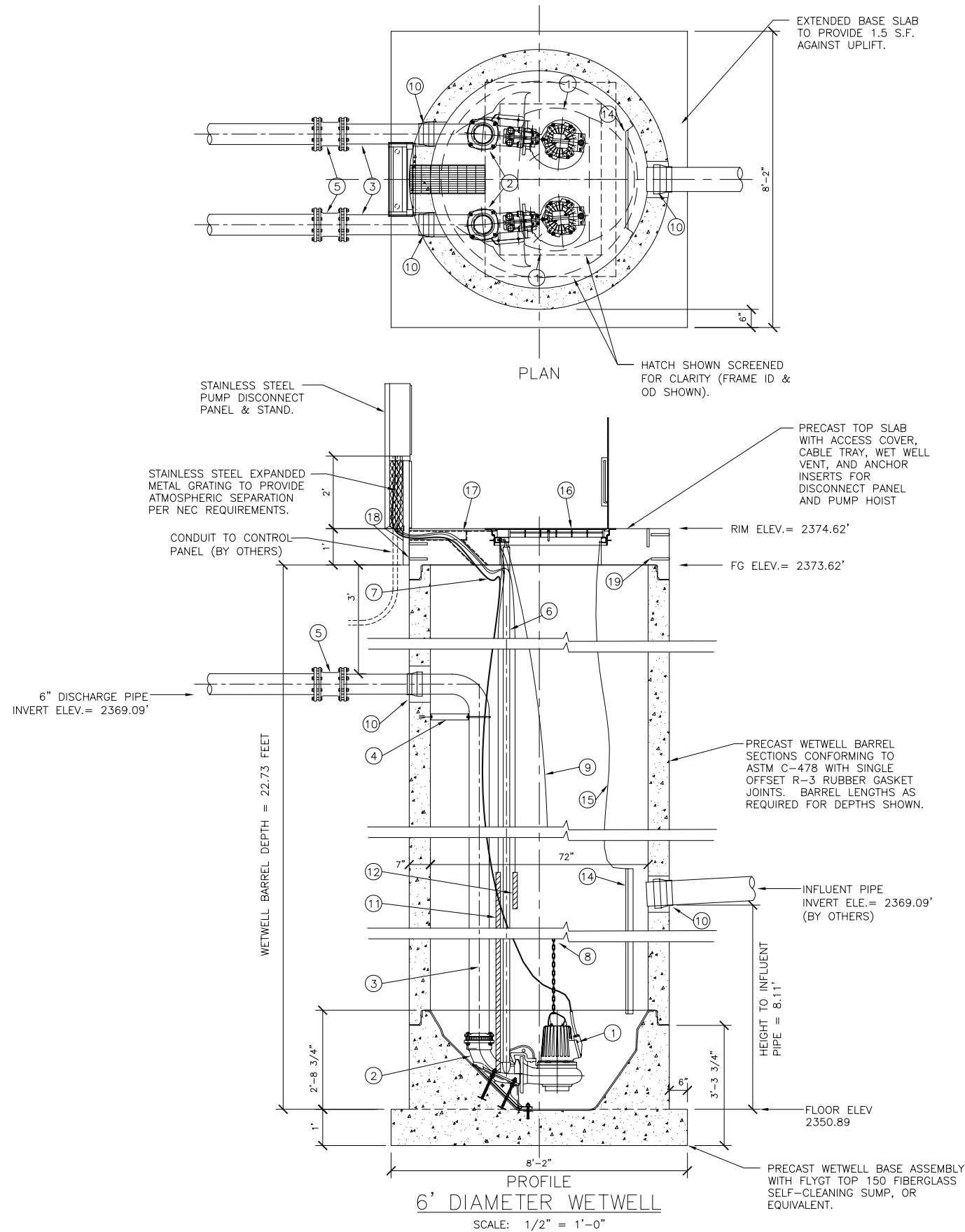


CUSTOM STORMWATER

DUPLEX-6' X 23' WET WELL

WET WELL, ELECTRICAL CONTROLS AND SCADA

NOTE: WETWELL TOP SLABS ARE NOT TRAFFIC RATED.



- ① SUBMERSIBLE NON-CLOG SEWAGE PUMPS, FLYGT MODEL NP-3127.090 (439). PROVIDE ONE PUMP WITH MIX FLUSH VALVE.
- ② 6-INCH FLYGT DISCHARGE ELBOW.
- ③ STAINLESS STEEL DISCHARGE PIPING (SCHD 40). PROVIDE ALL PIPE PENETRATION(S) WITH RUBBER BOOTS KOR-N-SEAL.
- ④ STAINLESS STEEL DISCHARGE PIPE ANCHOR BRACKET.
- ⑤ DI SLEEVE COUPLING, STAINLESS STEEL TO DI PIPING
- ⑥ TWO 2-INCH SCHEDULE 40 STAINLESS STEEL GUIDE BARS FOR EACH PUMP (FULL HEIGHT). ATTACH TO HATCH UNI-STRUT WITH FLYGT UPPER GUIDE BAR BRACKET.
- ⑦ PUMP POWER CABLE WITH QUICK CONNECT COUPLING AT PUMP DISCONNECT PANEL. PROVIDE EACH CABLE WITH A STAINLESS STEEL BASKET CABLE GRIP ATTACHED TO HOOK ON UPPER GUIDE BAR BRACKET.
- ⑧ STAINLESS STEEL CHAIN 1/4" (S4) FOR PUMP RETRIEVAL USING FLYGT GRIP-EYE. ATTACH TO PUMP LIFTING HANDLE.
- ⑨ 1/4-INCH (S4) STAINLESS STEEL CHAIN. ATTACH THE UPPER END OF THE CHAIN TO THE HOOK PROVIDED ON THE UPPER GUIDE BAR BRACKET. ATTACH THE LOWER END OF THE CHAIN TO THE PUMP HANDLE USING A 3/8" AND 1/2" STAINLESS STEEL BOW SHACKLE WITH SCREW PIN.
- ⑩ WETWELL SEAL, KOR-N-SEAL.
- ⑪ PUMP LIQUID LEVEL CONTROL PROBE, FLYGT MULTI-TRODE PROBE.
PROBE LENGTH = 5 FEET (1.5 METERS)
NUMBER OF SENSORS = 10
SENSOR SPACING = 6-INCHES.
PROVIDE MULTITRODE MTAK-1 PROBE MOUNTING BRACKET MOUNTED TO HATCH UNI-STRUT.
- ⑫ REDUNDENT HIGH WATER ALARM PROBE, MULTI-TRODE SINGLE SENSOR PROBE. MOUNT ON MAIN PROBE MOUNTING BRACKET.
- ⑬ NOT USED.
- ⑭ HDPE INFLUENT DEFLECTOR WITH FULL SIZE INSPECTION HOLE AND GUILLOTINE COVER.
- ⑮ 1/8" STAINLESS STEEL LIFTING CABLE FOR INFLUENT DEFLECTOR INSPECTION HOLE COVER. PERMANENTLY ATTACH UPPER END OF CABLE TO HATCH UNI-STRUT.
- ⑯ FLYGT ALUMINUM ACCESS HATCH PRECAST INTO WETWELL TOP SLAB. PROVIDE WITH SAFE-HATCH SAFETY GRATE BY FLYGT.
- ⑰ FRP CABLE TRAY AND WETWELL VENT PRECAST INTO WETWELL TOP SLAB. PROVIDE WITH REMOVABLE 1/2-INCH STAINLESS STEEL GRATING. GRATING TO BE MACHINED TO FIT UNDER THE EDGE OF THE WETWELL HATCH FRAME.
- ⑱ STAINLESS STEEL ANCHOR INSERTS FOR PUMP DISCONNECT PANEL.
- ⑲ STAINLESS STEEL ANCHOR INSERTS FOR PUMP DAVIT CRANE BASE.
- ⑳ NOT USED.

<p>VERIFY SCALE BAR IS ONE INCH ON ORIGINAL DRAWING IF NOT ONE INCH ON SCALES ACCORDINGLY</p>	<p>1"</p>	<p>DSN. DRN. CKD. DATE:</p>	<p>NO. DATE</p>	<p>DESCRIPTION REVISIONS</p>	<p>BY</p>
<p>ROMTEC UTILITIES</p>					
<p>18240 NORTH BANK ROAD ROSEBURG, OR 97470 (541) - 496-9678 FAX (541) - 496-0804</p>					
<p>6' WETWELL 6" DISCHARGE</p>					
<p>SHEET 1 OF 1 JOB NUMBER 0000</p>					

