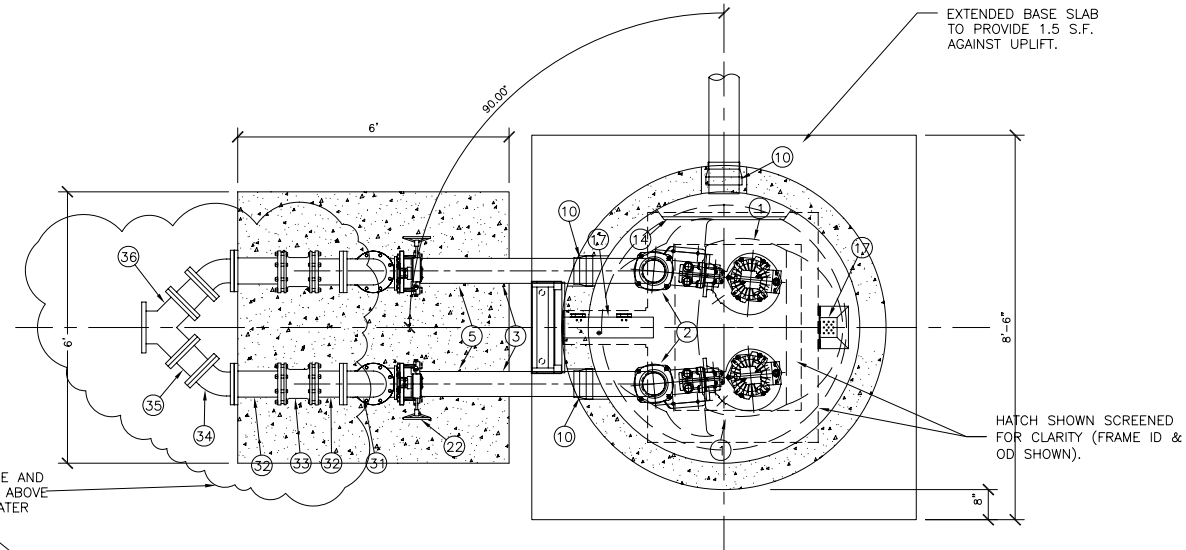


# CUSTOM STORMWATER

# DUPLEX-6' X 15' WET WELL & VALVE ASSEMBLY

WET WELL, ABOVE GROUND VALVE ASSEMBLY, ELECTRICAL CONTROLS, AND SCADA

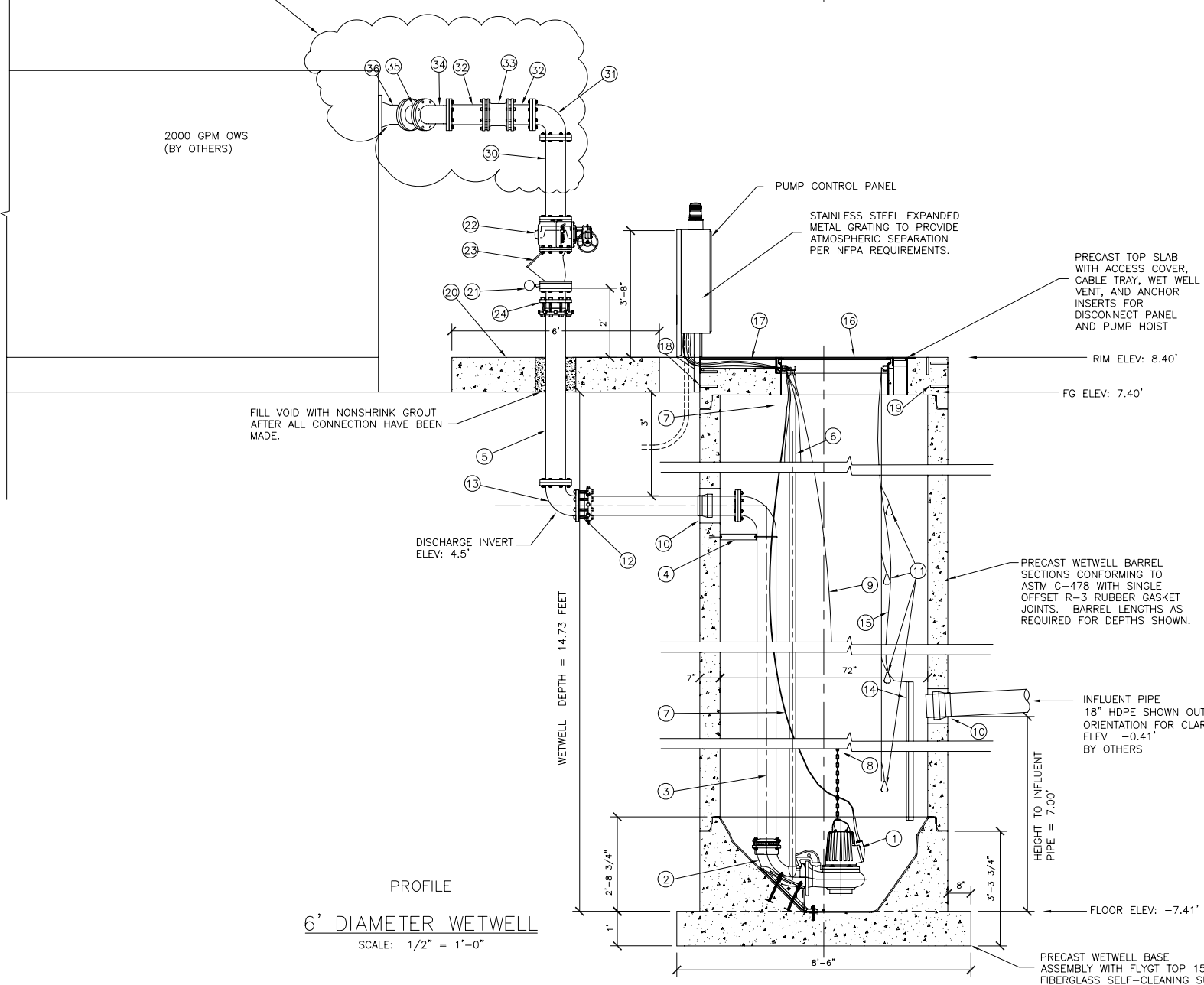


- 21 6" ISOLATION RING, ASHCROFT ISO-RING TYPE 81 WITH 3 1/2" PRESSURE GAUGE, ASHCROFT DURALIFE TYPE 1009, 30 PSI RANGE.
- 22 6" ECCENTRIC PLUG VALVE, VAL MATIC MODEL 5806R/7A08. PROVIDE WORM GEAR ACTUATOR WITH HAND WHEEL.
- 23 6" BALL CHECK VALVE, IIT FLYGT TYPE 5087.
- 24 6" RESTRAINED FLANGE COUPLING ADAPTER, RFCA-6.90.

SITE ENGINEER TO DESIGN AND CONTRACTOR TO PROVIDE AND INSTALL, ALL REQUIRED BRACING AND SUPPORT OF THE ABOVE GRADE PIPING BETWEEN THE WET WELL AND THE OIL WATER SEPERATOR.

- 30 6" DI SPOOL, FLG X PE, LENGTH AS REQUIRED. (BY OTHERS)
- 31 DI 90° BEND FLG X FLG (BY OTHERS)
- 32 6" D.I. SPOOL FLG X PE, LENGTH AS REQUIRED (BY OTHERS)
- 33 6" D.I. COUPLING, DRESSER (BY OTHERS)
- 34 6" D.I. 45° BEND FLG X FLG (BY OTHERS)
- 35 6" D.I. SPOOL, FLG X FLG (BY OTHERS)
- 36 8" X 6" D.I. TRUE WYE FLG X FLG (BY OTHERS)
- 37 NOT USED
- 38 NOT USED

CONTRACTOR TO PROVIDE AND INSTALL



PROFILE  
6' DIAMETER WETWELL  
SCALE: 1/2" = 1'-0"

- 1 SUBMERSIBLE NON-CLOG SEWAGE PUMPS, FLYGT MODEL CP-3127 (412). PROVIDE ONE PUMP WITH MIX FLUSH VALVE.
- 2 6-INCH FLYGT DISCHARGE ELBOW.
- 3 STAINLESS STEEL DISCHARGE PIPING (SCHD 40) FACTORY TESTED. PROVIDE ALL PIPE PENETRATION(S) WITH RUBBER BOOTS (KOR-N-SEAL).
- 4 STAINLESS STEEL DISCHARGE PIPE ANCHOR BRACKET.
- 5 6" D.I. SPOOL FLG X FLG.
- 6 TWO 2-INCH SCHEDULE 40 STAINLESS STEEL GUIDE BARS FOR EACH PUMP (FULL HEIGHT). ATTACH TO HATCH UNI-STRUT WITH FLYGT UPPER GUIDE BAR BRACKET.
- 7 PUMP POWER CABLE WITH QUICK CONNECT COUPLING AT PUMP CONTROL PANEL. PROVIDE EACH CABLE WITH A STAINLESS STEEL BASKET CABLE GRIP ATTACHED TO HOOK ON UPPER GUIDE BAR BRACKET.
- 8 STAINLESS STEEL CHAIN SLING FOR PUMP RETRIEVAL USING FLYGT GRIP-EYE. ATTACH TO PUMP LIFTING HANDLE.
- 9 1/4" STAINLESS STEEL CHAIN (S-4 ATTACHED TO PUMP HANDLE. PROVIDE CHAIN WITH 3/8" & 1/2" STAINLESS STEEL BOW SHACKLE WITH SCREW PIN ATTACHED TO PUMP HANDLE. ATTACH UPPER END OF CHAIN TO HOOK ON UPPER GUIDE BAR BRACKET.
- 10 WETWELL SEAL, KOR-N-SEAL.
- 11 PUMP LIQUID LEVEL CONTROL PROBE, MECHANICAL MICRO SWITCHES, FLYGT ENM-10 LIQUID LEVEL SENSORS NUMBER OF SENSORS = 4  
PROVIDE CABLE HOLDER, 304 STAINLESS STEEL.
- 12 RESTRAINED FLANGED COUPLING, ROMAC RFCA 6.90 WITH STEEL SIZE GASKETS.
- 13 6" D.I. 90° BEND, FLG X FLG.
- 14 HDPE INFLUENT DEFLECTOR WITH FULL SIZE INSPECTION HOLE AND GUILLOTINE COVER.
- 15 1/8" STAINLESS STEEL LIFTING CABLE FOR INFLUENT DEFLECTOR INSPECTION HOLE COVER. PERMANENTLY ATTACH UPPER END OF CABLE TO HATCH UNI-STRUT.
- 16 ALUMINUM ACCESS HATCH PRECAST INTO WETWELL TOP SLAB. FLYGT MODEL FLED 33X50A0HOSH. PROVIDE WITH SAFE-HATCH SAFETY GRATE BY FLYGT.
- 17 ALUMINUM CABLE HATCH AND WETWELL VENT PRECAST INTO WETWELL TOP SLAB. PROVIDE WITH STAINLESS STEEL HINGES AND SLAM-LOCK.
- 18 STAINLESS STEEL ANCHOR INSERTS FOR PUMP DISCONNECT PANEL.
- 19 STAINLESS STEEL ANCHOR INSERTS FOR PUMP DAVIT CRANE BASE.
- 20 PRECAST CONCRETE SLAB, 72" X 72" X 12" WITH TWO (2) 16" KNOCK OUTS, 2' - 6" CL TO CL CENTERED IN THE SLAB

VERIFY SCALE  
BAR IS ONE INCH ON ORIGINAL DRAWING  
IF NOT ONE INCH ON SCALES ACCORDINGLY

NO.	DATE	DESCRIPTION	BY

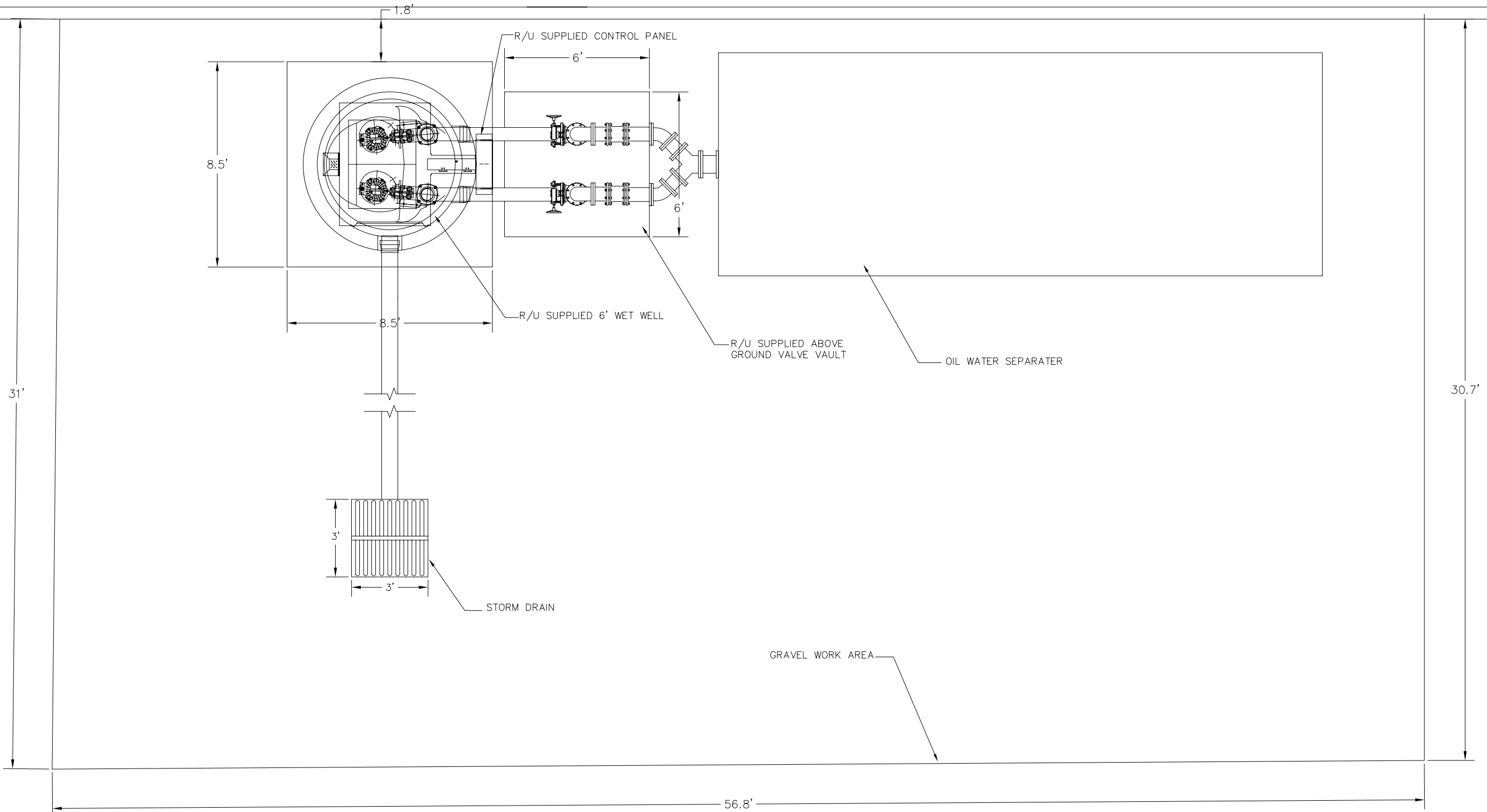
**ROMTEC UTILITIES**  
18240 NORTH BANK ROAD  
ROSEBURG, OR 97470  
(541) - 496 - 9678  
FAX (541) - 496 - 0804

ROMTC UTILITIES  
6' WETWELL  
&  
6" DISCHARGE  
&  
6" VALVE ASSEMBLY

# CUSTOM STORMWATER

# DUPLEX-6' X 15' SITE PLAN

WET WELL, ABOVE GROUND VALVE ASSEMBLY, ELECTRICAL CONTROLS, AND SCADA



NO.	DATE	DESCRIPTION	BY

DSN. \_\_\_\_\_  
 DRN. \_\_\_\_\_  
 CKD. \_\_\_\_\_  
 DATE: \_\_\_\_\_

ROMTEC UTILITIES  
 18240 NORTH BANK ROAD  
 ROSEBURG, OR 97470  
 (541) - 496 - 9678  
 FAX (541) - 496 - 0804

ROMTEC UTILITIES  
 SITE PLAN

SHEET  
 1 OF 1  
 JOB NUMBER  
 RMTc 0000