

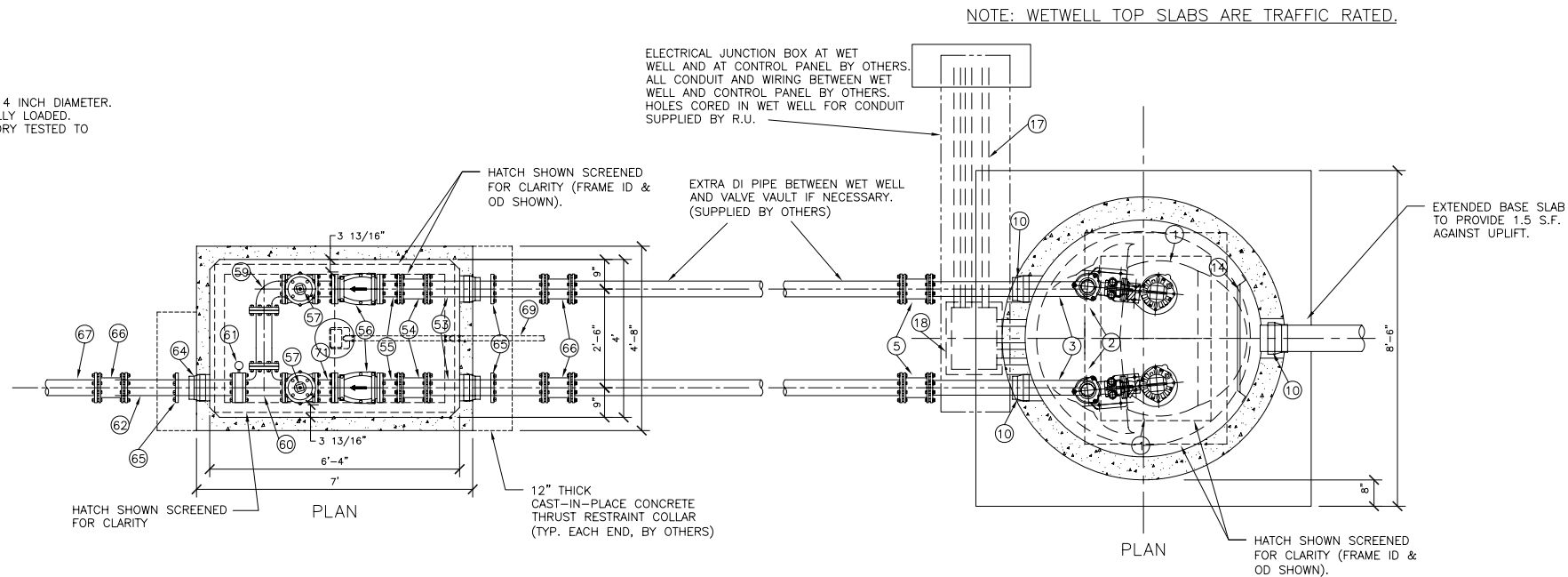
# CUSTOM STORMWATER

# DUPLEX-6' X 14' WET WELL & VALVE VAULT

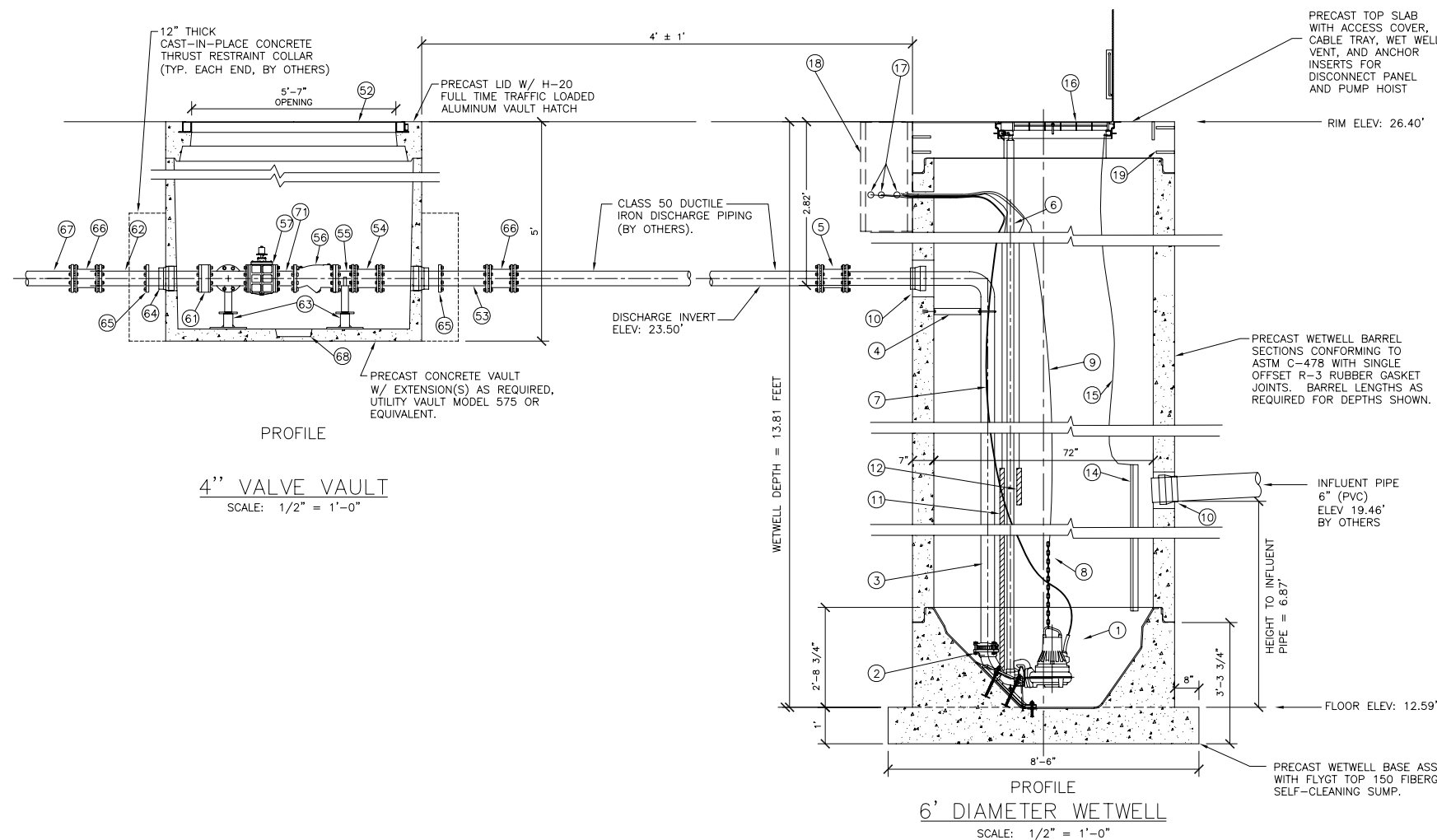
WET WELL, VALVE VAULT, ELECTRICAL CONTROLS, SCADA, INTERCEPTOR AND WEIR STRUCTURE

**VAULT DESIGN NOTES:**  
 1. ALL PIPING & VALVES WITHIN VAULT ARE 4 INCH DIAMETER.  
 2. HATCH DESIGN LOADS: H-20 OCCASIONALLY LOADED.  
 3. VALVES AND VAULT PIPING SYSTEM FACTORY TESTED TO 100 PSI FOR 2 HOURS AFTER ASSEMBLY.

- 51 NOT USED.
- 52 FLYGT GALVANIZED STEEL ACCESS HATCH PRECAST INTO VAULT TOP SLAB.
- 53 CL 53 DI PIPE SPOOL (PE x PE)
- 54 DI SLEEVE COUPLING, DI TO DI PIPE
- 55 DI PIPE SPOOL (FLG x PE)
- 56 FLANGED DI BODY SWING CHECK VALVE, VALMATIC 504. PROVIDE ONE VALVE WITH BACKFLOW DEVICE AND BOTH W/MECHANICAL INDICATOR.
- 57 CAM-CENTRIC PLUG VALVE W/2-INCH OPERATING NUT, VALMATIC MODEL 5804.
- 58 NOT USED.
- 59 DI 90° BEND (FLG x FLG)
- 60 DI TEE (FLG x FLG)
- 61 LIQUID FILLED ISOLATION RING, ASHCROFT ISO RING TYPE 81 WITH 3 1/2" PRESSURE GAUGE ASHCROFT 1009.
- 62 DI PIPE SPOOL (FLG x PE)
- 63 ADJUSTABLE PIPE SUPPORT, STANDON (TYP OF 3).
- 64 VAULT SEAL, KOR-N-SEAL (TYP OF 3).
- 65 RETAINER GLAND CENTERED IN THRUST COLLAR, ROMA-GRIP (TYP OF 3).
- 66 SLEEVE COUPLING, DI TO DI (BY OTHERS)
- 67 FORCE MAIN (BY OTHERS).
- 68 PRECAST VAULT SUMP FOR PUMP OR GRAVITY DRAIN TO APPROVED POINT.



NOTE: VAULT TOP SLABS ARE TRAFFIC RATED.



- 1 SUBMERSIBLE NON-CLOG SEWAGE PUMPS, FLYGT MODEL NP-3085(463). PROVIDE ONE PUMP WITH MIX FLUSH VALVE.
- 2 4-INCH FLYGT DISCHARGE ELBOW.
- 3 STAINLESS STEEL DISCHARGE PIPING (SCHD 40) FACTORY TESTED. PROVIDE ALL PIPE PENETRATION(S) WITH RUBBER BOOTS (KOR-N-SEAL).
- 4 STAINLESS STEEL DISCHARGE PIPE ANCHOR BRACKET.
- 5 DI SLEEVE COUPLING, STAINLESS STEEL TO DI PIPING
- 6 TWO 2-INCH SCHEDULE 40 STAINLESS STEEL GUIDE BARS FOR EACH PUMP (FULL HEIGHT). ATTACH TO HATCH UNI-STRUT WITH FLYGT UPPER GUIDE BAR BRACKET.
- 7 PUMP POWER CABLE TO TERMINAL BLOCK IN JUNCTION BOX (JUNCTION BOX AND TERMINAL BLOCK SUPPLIED BY OTHERS). PROVIDE EACH CABLE WITH A STAINLESS STEEL BASKET CABLE GRIP ATTACHED TO HOOK ON UPPER GUIDE BAR BRACKET.
- 8 STAINLESS STEEL CHAIN SLING FOR PUMP RETRIEVAL USING FLYGT GRIP-EYE. ATTACH TO PUMP LIFTING HANDLE.
- 9 1/4" STAINLESS STEEL CHAIN (S-4 ATTACHED TO PUMP HANDLE. PROVIDE CHAIN WITH 3/8" & 1/2" STAINLESS STEEL BOW SHACKLE WITH SCREW PIN ATTACHED TO PUMP HANDLE. ATTACH UPPER END OF CHAIN TO HOOK ON UPPER GUIDE BAR BRACKET.
- 10 WETWELL SEAL, KOR-N-SEAL.
- 11 PUMP LIQUID LEVEL CONTROL PROBE, FLYGT MULTI-TRODE PROBE. PROBE LENGTH = 5 FEET (1.5 METERS) NUMBER OF SENSORS = 10. SENSOR SPACING = 6-INCHES. PROVIDE MULTITRODE MTK-1 PROBE MOUNTING BRACKET MOUNTED TO HATCH UNI-STRUT.
- 12 REDUNDANT CONTROL SYSTEM. CUSTOM MULTI-TRODE 3 SENSOR PROBE FOR REDUNDANT HIGH LEVEL ALARM AND PUMP START COMMAND.
- 13 NOT USED.
- 14 HDPE INFLUENT DEFLECTOR WITH FULL SIZE INSPECTION HOLE AND GUILLOTINE COVER.
- 15 1/8" STAINLESS STEEL LIFTING CABLE FOR INFLUENT DEFLECTOR INSPECTION HOLE COVER. PERMANENTLY ATTACH UPPER END OF CABLE TO HATCH UNI-STRUT.
- 16 FLYGT GALVANIZED STEEL ACCESS HATCH PRECAST INTO WETWELL TOP SLAB. PROVIDE WITH SAFE-HATCH SAFETY GRATE BY FLYGT.
- 17 PUMP CABLE CONDUIT AND LEVEL SENSING CABLE CONDUIT SUPPLIED BY OTHERS.
- 18 PUMP CABLE AND LEVEL SENSING CABLE JUNCTION BOX SUPPLIED BY OTHERS.
- 19 STAINLESS STEEL ANCHOR INSERTS FOR PUMP DAVIT CRANE BASE.
- 20 NOTE USED.

VERIFY SCALE BAR IS ONE INCH ON ORIGINAL DRAWING IF NOT ONE INCH ON SCALES ACCORDINGLY	1"	0	DSN.	CRK.	NO.	DATE	DESCRIPTION	BY
<p><b>ROMTEC UTILITIES</b></p> <p>18240 NORTH BANK ROAD ROSEBURG, OR 97470 (541) 496-9678 FAX (541) 496-0804</p> <p>6' WETWELL &amp; VAULT 4" DISCHARGE</p>								
<p>SHEET 1 OF 1</p> <p>JOB NUMBER RMT0000</p>								

