

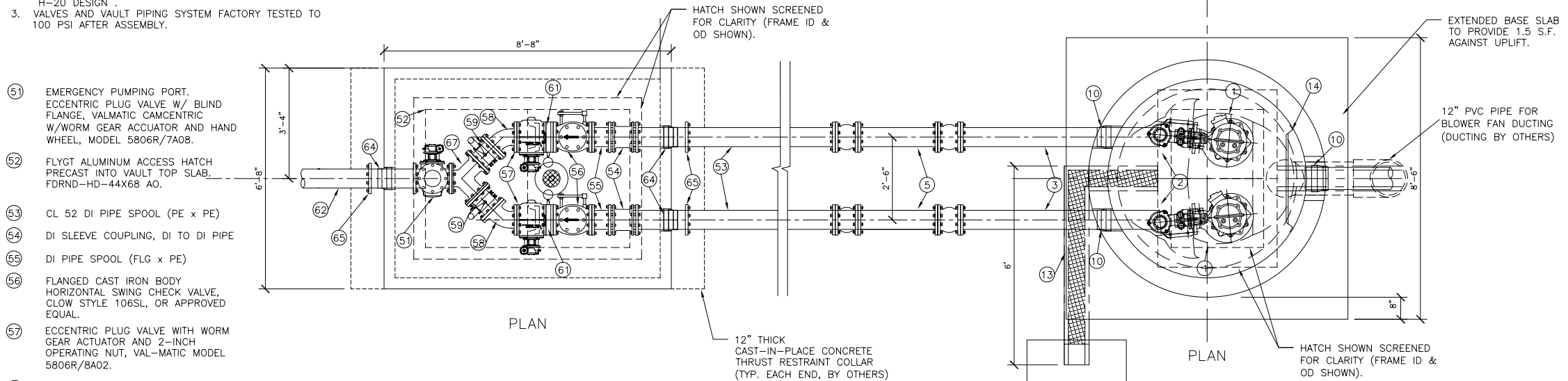
CUSTOM WASTEWATER DUPLEX-6' X 34' WET WELL & VALVE VAULT

WET WELL, VALVE VAULT, ELECTRICAL CONTROLS AND SCADA

VAULT DESIGN NOTES:

- ALL PIPING & VALVES WITHIN VAULT ARE 6 INCH DIAMETER.
- HATCH DESIGN LOADS: OCCASIONALLY TRAFFIC LOADED, H-20 DESIGN.
- VALVES AND VAULT PIPING SYSTEM FACTORY TESTED TO 100 PSI AFTER ASSEMBLY.

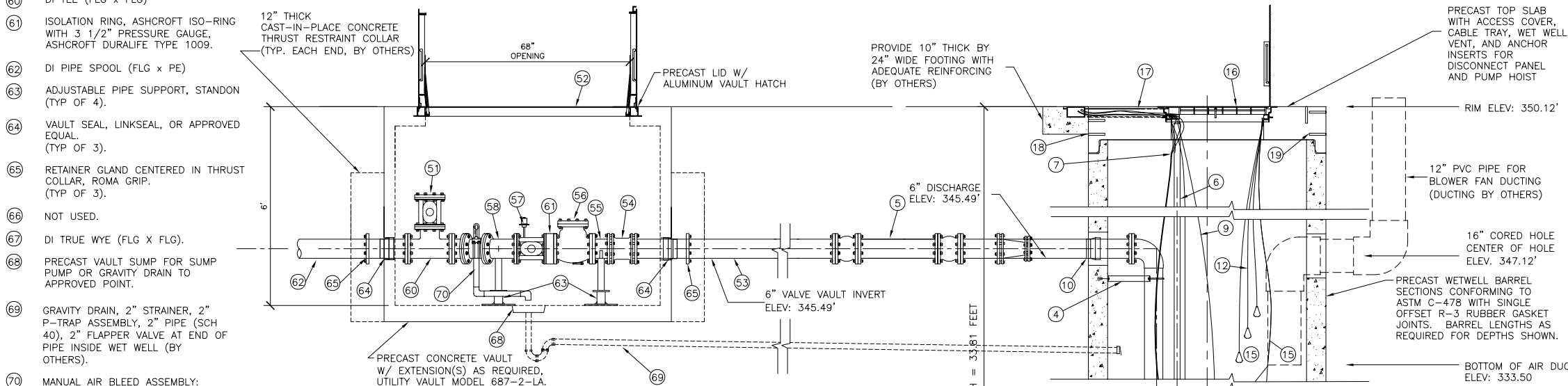
NOTE: WETWELL TOP SLAB IS OCCASIONALLY TRAFFIC RATED



- 51 EMERGENCY PUMPING PORT. ECCENTRIC PLUG VALVE W/ BLIND FLANGE, VALMATIC CAMCENTRIC W/WORM GEAR ACTUATOR AND HAND WHEEL, MODEL 5806R/7A08.
- 52 FLYGT ALUMINUM ACCESS HATCH PRECAST INTO VAULT TOP SLAB. FDRND-HD-44X68 AO.
- 53 CL 52 DI PIPE SPOOL (PE x PE)
- 54 DI SLEEVE COUPLING, DI TO DI PIPE
- 55 DI PIPE SPOOL (FLG x PE)
- 56 FLANGED CAST IRON BODY HORIZONTAL SWING CHECK VALVE, CLOW STYLE 106SL, OR APPROVED EQUAL.
- 57 ECCENTRIC PLUG VALVE WITH WORM GEAR ACTUATOR AND 2-INCH OPERATING NUT, VAL-MATIC MODEL 5806R/8A02.
- 58 DI 45° BEND (FLG x FLG)
- 59 DI PIPE SPOOL (FLG x FLG)
- 60 DI TEE (FLG x FLG)
- 61 ISOLATION RING, ASHCROFT ISO-RING WITH 3 1/2" PRESSURE GAUGE, ASHCROFT DURALIFE TYPE 1009.
- 62 DI PIPE SPOOL (FLG x PE)
- 63 ADJUSTABLE PIPE SUPPORT, STANDON (TYP OF 4).
- 64 VAULT SEAL, LINKSEAL, OR APPROVED EQUAL. (TYP OF 3).
- 65 RETAINER GLAND CENTERED IN THRUST COLLAR, ROMA GRIP. (TYP OF 3).
- 66 NOT USED.
- 67 DI TRUE WYE (FLG X FLG).
- 68 PRECAST VAULT SUMP FOR SUMP PUMP OR GRAVITY DRAIN TO APPROVED POINT.
- 69 GRAVITY DRAIN, 2" STRAINER, 2" P-TRAP ASSEMBLY, 2" PIPE (SCH 40), 2" FLAPPER VALVE AT END OF PIPE INSIDE WET WELL (BY OTHERS).
- 70 MANUAL AIR BLEED ASSEMBLY:
 - A - SERVICE SADDLE W/ 1/2" TAP (FIP)
 - B - 1/2" STAINLESS STEEL BALL VALVE W/"DEADMAN" SPRING RETURN HANDLE
 - C - 1/2" x 1" 90° ELL
 - D - 1" x 2" PVC INCREASER
 - E - 2" 90° PVC BEND
 - F - 2" SCH. 40 PIPE (TYP)

- 1 SUBMERSIBLE NON-CLOG SEWAGE PUMPS, FLYGT MODEL NP-3171 (435) W/ 60' OF CABLE. PROVIDE ONE PUMP WITH MIX FLUSH VALVE.
- 2 4-INCH FLYGT DISCHARGE ELBOW.
- 3 6" STAINLESS STEEL DISCHARGE PIPING (SCH 40) FACTORY TESTED. PROVIDE ALL PIPE PENETRATION(S) WITH RUBBER BOOTS (KOR-N-SEAL).
- 4 STAINLESS STEEL DISCHARGE PIPE ANCHOR BRACKET.
- 5 FLEXIBLE EXPANSION COUPLING, ROMAC FLEXJOINT.
- 6 TWO 2-INCH SCHEDULE 40 STAINLESS STEEL GUIDE BARS FOR EACH PUMP (FULL HEIGHT). ATTACH TO HATCH UNI-STRUT WITH FLYGT UPPER GUIDE BAR BRACKET.
- 7 PUMP POWER CABLE WITH QUICK CONNECT COUPLING AT PUMP CONTROL PANEL. PROVIDE EACH CABLE WITH A STAINLESS STEEL BASKET CABLE GRIP ATTACHED TO HOOK ON UPPER GUIDE BAR BRACKET.
- 8 STAINLESS STEEL CHAIN SLING FOR PUMP RETRIEVAL USING FLYGT GRIP-EYE. ATTACH TO PUMP LIFTING HANDLE.
- 9 1/4" STAINLESS STEEL CHAIN (S-4 ATTACHED TO PUMP HANDLE. PROVIDE CHAIN WITH 3/8" & 1/2" STAINLESS STEEL BOW SHACKLE WITH SCREW PIN ATTACHED TO PUMP HANDLE. ATTACH UPPER END OF CHAIN TO HOOK ON UPPER GUIDE BAR BRACKET.
- 10 WETWELL SEAL, LINKSEAL, OR APPROVED EQUAL.
- 11 PUMP LIQUID LEVEL CONTROL PRESSURE TRANSDUCER, FLYGT LS100. PROVIDE MOUNTING BRACKET MOUNTED TO HATCH UNI-STRUT. PROVIDE HEAVILY WEIGHTED STAINLESS STEEL CABLE.
- 12 REDUNDANT CONTROL SYSTEM. (3) FLYGT ENM-10 LIQUID LEVEL SENSORS. PROVIDE HEAVILY WEIGHTED STAINLESS STEEL CABLE.
- 13 CABLE HATCH EXTENSION SIX FOOT (6') WITH LEFT HAND 90° TRANSITION.
- 14 HDPE INFLUENT DEFLECTOR WITH FULL SIZE INSPECTION HOLE AND GUILLOTINE COVER.
- 15 1/8" STAINLESS STEEL LIFTING CABLE FOR INFLUENT DEFLECTOR INSPECTION HOLE COVER. PERMANENTLY ATTACH UPPER END OF CABLE TO HATCH UNI-STRUT.
- 16 FLYGT ALUMINUM ACCESS HATCH PRECAST INTO WETWELL TOP SLAB. PROVIDE WITH SAFE-HATCH SAFETY GRATE BY FLYGT. FLED-HD-33-SX44AOSH. PROVIDE SLAM-LOCK AND RECESSED PADLOCK HASP.
- 17 ALUMINUM CABLE HATCH AND WETWELL VENT PRECAST INTO WETWELL TOP SLAB. PROVIDE WITH STAINLESS STEEL HINGES AND SLAM-LOCK.
- 18 STAINLESS STEEL ANCHOR INSERTS FOR PUMP DISCONNECT PANEL.
- 19 STAINLESS STEEL ANCHOR INSERTS FOR PUMP DAVIT CRANE BASE.
- 20 NOT USED.

NOTE: VAULT TOP SLAB IS OCCASIONALLY TRAFFIC RATED

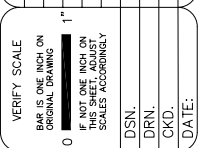


PROFILE
6" VALVE VAULT
SCALE: 1/2" = 1'-0"

PROFILE
6' DIAMETER WETWELL
SCALE: 1/2" = 1'-0"

WET WELL LEVEL SETTINGS:

LEAD PUMP OFF ELEV.	=	319.10
LAG PUMP OFF ELEV.	=	319.60
LEAD PUMP START ELEV.	=	323.00
LAG PUMP START ELEV.	=	323.50
HIGH LEVEL ALARM ELEV.	=	324.00



NO.	DATE	DESCRIPTION	BY

ROMTEC UTILITIES
18240 NORTH BANK ROAD
ROSEBURG, OR 97470
(541) 496-9678
FAX (541) 496-0804

ROMTEC UTILITIES
6' WETWELL & 6" VALVE VAULT
6" DISCHARGE & 6" VAULT

