

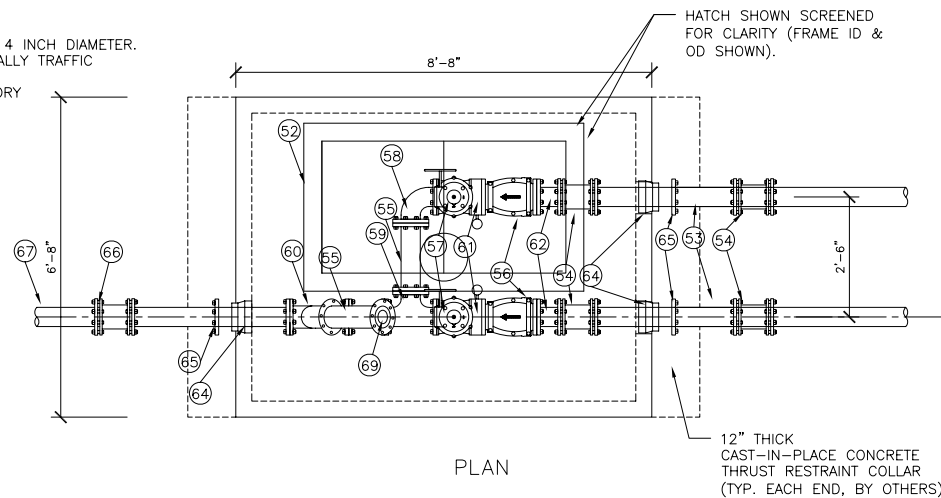
CUSTOM WASTEWATER

DUPLEX-6' X 20' WET WELL & VALVE VAULT

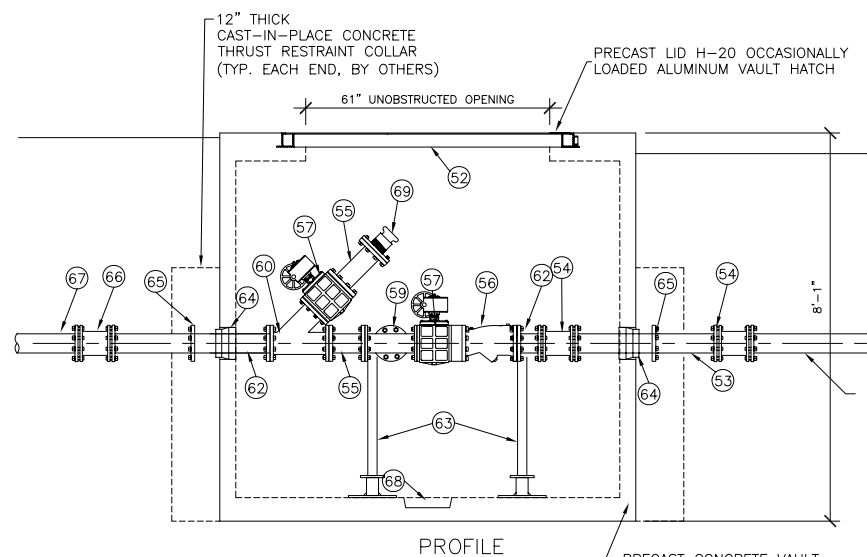
NOTE: WETWELL TOP SLABS H-20 OCCASIONALLY TRAFFIC RATED.

- VAULT DESIGN NOTES:
1. ALL PIPING & VALVES WITHIN VAULT ARE 4 INCH DIAMETER.
 2. HATCH DESIGN LOADS: H-20 OCCASIONALLY TRAFFIC LOADED
 3. VALVES AND VAULT PIPING SYSTEM FACTORY TESTED AFTER ASSEMBLY.

- (51) NOT USED.
- (52) FLYGT ALUMINUM ACCESS HATCH PRECAST INTO VAULT TOP SLAB.
- (53) 4" CL 52 DI PIPE SPOOL (PE x PE)
- (54) 4" DI SLEEVE COUPLING, DI TO DI PIPE
- (55) 4" DI PIPE SPOOL, (FLG. X FLG.)
- (56) 4" FLANGED DI BODY SWING CHECK VALVE, APCO MODEL 104P3. PROVIDE ONE WITH OPTIONAL BACKFLOW DEVICE.
- (57) 4" ECCENTRIC PLUG VALVE W/ HAND WHEEL OPERATOR, DEZURIK MODEL PEC4.
- (58) 4" DI BEND, 90 DEGREE.
- (59) 4" DI TEE, (FLG X FLG)
- (60) 4" DI WYE (FLG x FLG) WITH BLIND FLANGE.
- (61) 4" WAFER STYLE DIAPHRAM PRESSURE SENSOR, RED VALVE SERIES 40.
- (62) 4" DI PIPE SPOOL (FLG x PE)
- (63) ADJUSTABLE PIPE SUPPORT, STANDON (TYP OF 4).
- (64) 4" VAULT SEAL, KOR-N-SEAL (TYP OF 3).
- (65) 4" RETAINER GLAND CENTERED IN THRUST COLLAR, MEGALUG (TYP OF 3).
- (66) SLEEVE COUPLING, DI VAULT PIPING TO FORCE MAIN PIPING (BY OTHERS)
- (67) FORCE MAIN (BY OTHERS).
- (68) PRECAST VAULT SUMP FOR GRAVITY DRAIN TO APPROVED POINT.
- (69) 4" MALE CAM-LOCK.

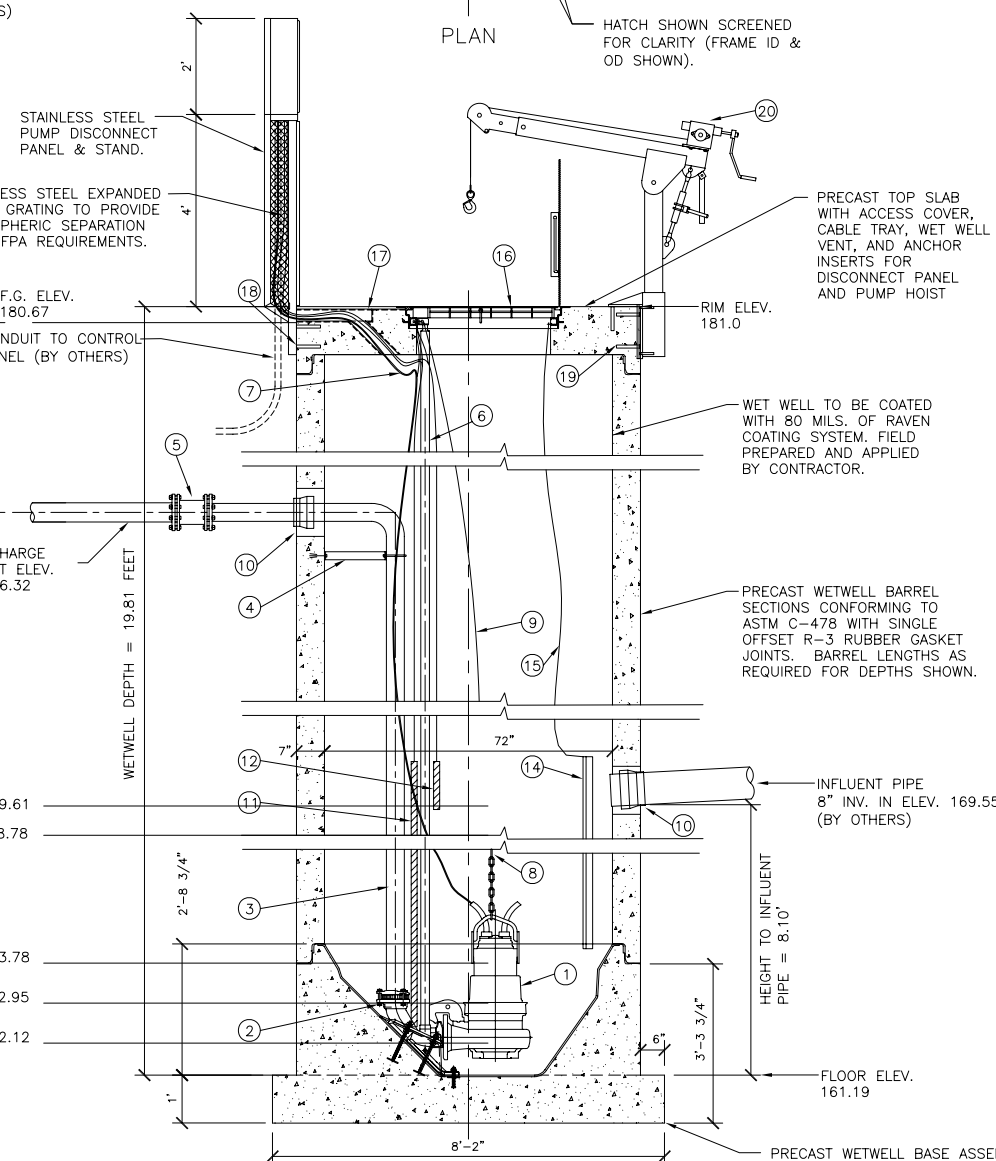
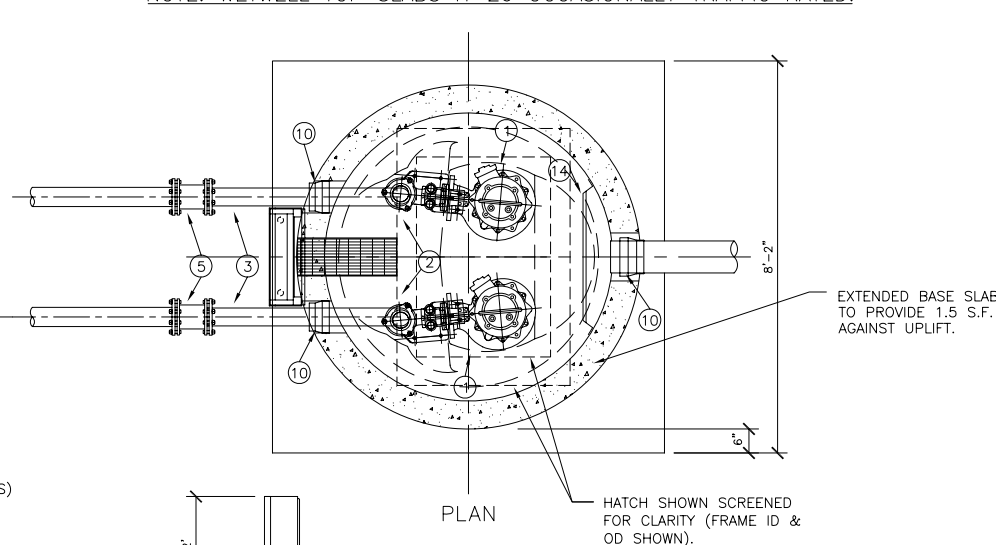


NOTE: VAULT TOP SLABS ARE H-20 OCCASIONALLY TRAFFIC RATED.



4" VALVE VAULT
SCALE: 1/2" = 1'-0"

- HIGH LEVEL ALARM - 169.61
- LAG PUMP START - 168.78
- LEAD PUMP START - 163.78
- PUMPS STOP - 162.95
- LOW LEVEL ALARM - 162.12



6' DIAMETER WETWELL
SCALE: 1/2" = 1'-0"

- (1) SUBMERSIBLE NON-CLOG SEWAGE PUMPS, FLYGT MODEL NP-3153 (452). PROVIDE ONE PUMP WITH MIX FLUSH VALVE.
- (2) 4-INCH FLYGT DISCHARGE ELBOW.
- (3) STAINLESS STEEL DISCHARGE PIPING (SCHD 40) FACTORY TESTED. PROVIDE ALL PIPE PENETRATION(S) WITH RUBBER BOOTS (KOR-N-SEAL).
- (4) STAINLESS STEEL DISCHARGE PIPE ANCHOR BRACKET.
- (5) DI SLEEVE COUPLING, STAINLESS STEEL TO DI PIPING
- (6) TWO 2-INCH SCHEDULE 40 STAINLESS STEEL GUIDE BARS FOR EACH PUMP (FULL HEIGHT). ATTACH TO HATCH UNI-STRUT WITH FLYGT UPPER GUIDE BAR BRACKET.
- (7) PUMP POWER CABLE WITH QUICK CONNECT COUPLING AT PUMP DISCONNECT PANEL. PROVIDE EACH CABLE WITH A STAINLESS STEEL BASKET CABLE GRIP ATTACHED TO HOOK ON UPPER GUIDE BAR BRACKET.
- (8) STAINLESS STEEL CHAIN SLING FOR PUMP RETRIEVAL USING FLYGT GRIP-EYE. ATTACH TO PUMP LIFTING HANDLE.
- (9) STAINLESS STEEL CHAIN 1/4" (S4) ATTACHED TO PUMP HANDLE. PROVIDE 1/2" AND 3/8" STAINLESS STEEL BOW SHACKLES WITH SCREW PINS. ATTACH UPPER END OF CHAIN TO HOOK ON UPPER GUIDE BAR BRACKET.
- (10) WETWELL SEAL, KOR-N-SEAL.
- (11) PUMP LIQUID LEVEL CONTROL PROBE, FLYGT MULTI-TRODE PROBE OR EQUIVALENT. PROBE LENGTH = 8.2 FEET (2.5 METERS) NUMBER OF SENSORS = 10 SENSOR SPACING = 10-INCHES. PROVIDE MULTITRODE MTK-1 PROBE MOUNTING BRACKET MOUNTED TO HATCH UNI-STRUT.
- (12) REDUNDANT HIGH LEVEL ALARM. MULTI-TRODE SINGLE SENSOR PROBE. MOUNT ON MAIN PROBE MOUNTING BRACKET.
- (13) NOT USED.
- (14) HDPE INFLUENT DEFLECTOR WITH FULL SIZE INSPECTION HOLE AND GUILLOTINE COVER.
- (15) 1/8" STAINLESS STEEL LIFTING CABLE FOR INFLUENT DEFLECTOR INSPECTION HOLE COVER. PERMANENTLY ATTACH UPPER END OF CABLE TO HATCH UNI-STRUT.
- (16) FLYGT ALUMINUM ACCESS HATCH PRECAST INTO WETWELL TOP SLAB. H-20 OCCASIONALLY LOADED DESIGN LOADING. PROVIDE WITH SAFE-HATCH SAFETY GRATE BY FLYGT.
- (17) ALUMINUM CABLE HATCH AND WETWELL VENT PRECAST INTO WETWELL TOP SLAB. PROVIDE WITH HINGED DOOR AND SLAM LOCK.
- (18) STAINLESS STEEL ANCHOR INSERTS FOR PUMP DISCONNECT PANEL.
- (19) STAINLESS STEEL ANCHOR INSERTS FOR PUMP DAVIT BASE.
- (20) PUMP DAVIT CRANE, THERN MODEL 5124.

VERIFY SCALE BAR IS ONE INCH ON ORIGINAL DRAWING IF NOT ONE INCH ON SCALES ACCORDINGLY	NO.	DATE	BY
DESCRIPTION	NO.	DATE	BY
REVISIONS	NO.	DATE	BY

ROMTEC UTILITIES

18240 NORTH BANK ROAD
ROSEBURG, OR 97470
(541)-496-3541
FAX (541)-496-0803

6' WETWELL
4" DISCHARGE & VAULT
FLYGT NP 3153 PUMPS

SHEET
1 OF 1
JOB NUMBER
RMTc 0000

