

# CUSTOM WASTEWATER

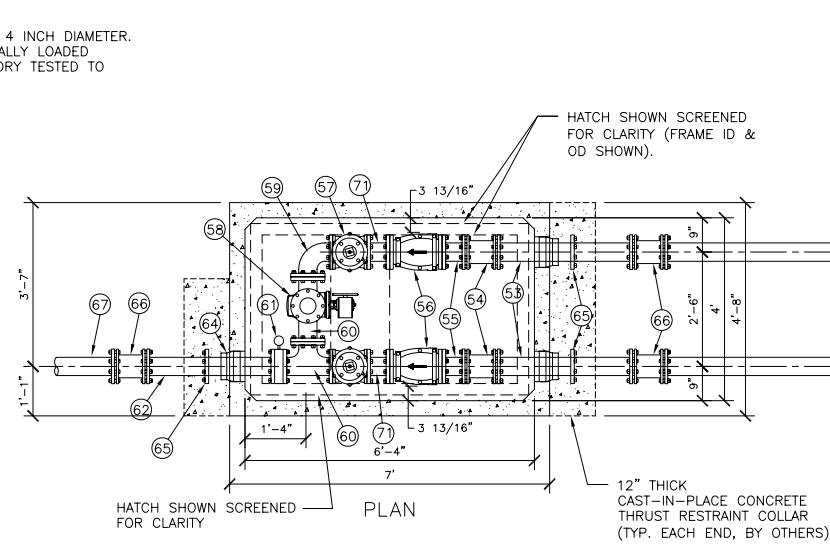
# DUPLEX-6' X 17' WET WELL & VALVE VAULT

WET WELL, VALVE VAULT, ELECTRICAL CONTROLS, GENERATOR, ODOR CONTROLS, SCADA AND CONTROL SHELTER

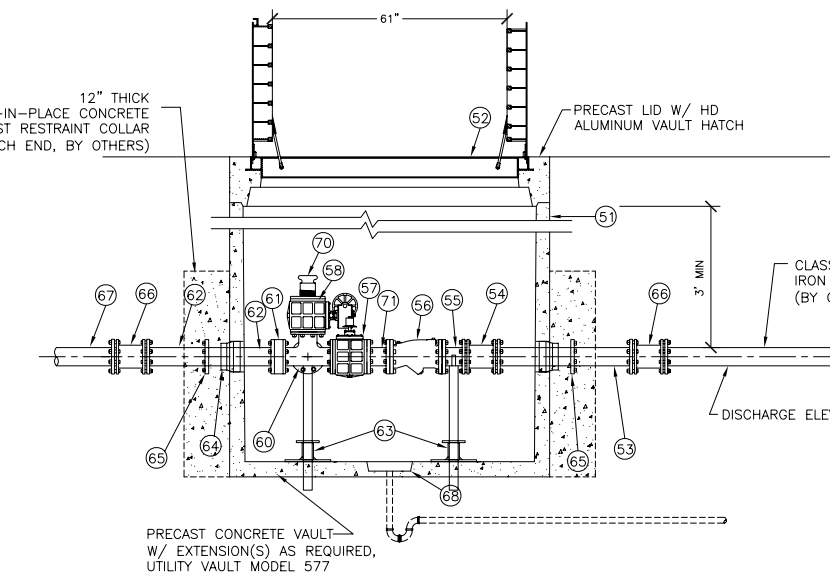
NOTE: WETWELL TOP SLAB IS H-20 OCCASIONAL TRAFFIC RATED.

- VAULT DESIGN NOTES:**
- ALL PIPING & VALVES WITHIN VAULT ARE 4 INCH DIAMETER.
  - HATCH DESIGN LOADS: H-20 OCCASIONALLY LOADED
  - VALVES AND VAULT PIPING SYSTEM FACTORY TESTED TO AFTER ASSEMBLY.

- VAULT EXTENSION RISER(S), HEIGHT AS REQUIRED FOR PIPE COVER DEPTH SHOWN.
- FLYGT ALUMINUM ACCESS HATCH PRECAST INTO VAULT TOP SLAB. FDRND-HD-33X61AO H-20 OCCASIONAL TRAFFIC RATED HATCH
- CL 52 DI PIPE SPOOL (PE x PE)
- DI SLEEVE COUPLING, DI TO DI PIPE
- DI PIPE SPOOL (FLG x PE)
- FLANGED DI BODY SWING CHECK VALVE, VALMATIC MODEL 504MI. PROVIDE ONE VALVE WITH BACKFLOW DEVICE.
- ECCENTRIC PLUG VALVE W/2-INCH OPERATING NUT, VAL-MATIC MODEL 5804RN.
- ECCENTRIC PLUG VALVE W/HAND WHEEL OPERATOR, VAL-MATIC MODEL 5804R/7A08.
- DI 90° BEND (FLG x FLG)
- DI TEE (FLG x FLG)
- ASHCROFT ISO RING, TYPE 81 WITH 3-1/2" ASHCROFT PRESSURE GAUGE TYPE 1009. 100PSI
- DI PIPE SPOOL (FLG x PE)
- ADJUSTABLE PIPE SUPPORT, STANDON (TYP OF 4).
- VAULT SEAL, KOR-N-SEAL (TYP OF 3).
- RETAINER GLAND CENTERED IN THRUST COLLAR, UNI-FLANGE (TYP OF 3).
- SLEEVE COUPLING (BY OTHERS)
- FORCE MAIN (BY OTHERS).
- PRECAST VAULT SUMP FOR SUMP PUMP OR GRAVITY DRAIN TO APPROVED POINT.
- GRAVITY DRAIN (BY OTHERS). CONTRACTOR TO CONNECT DRAIN TO PUMP STATION SITE ENGINEERS REQUIREMENTS.
- 4" CAM-LOCK, MALE X I.P. THREADED.
- DI PIPE SPOOL (FLG x FLG)

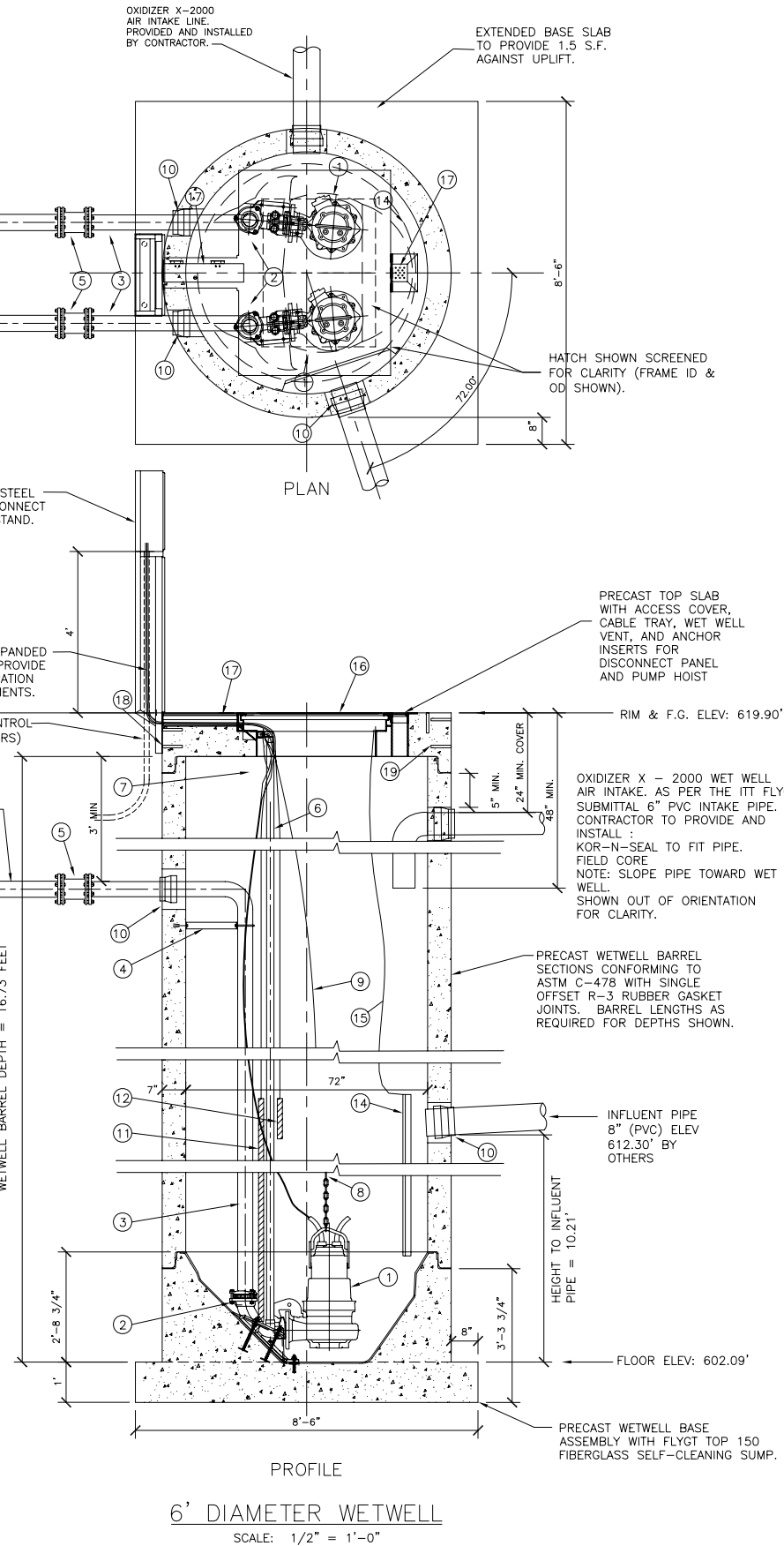


NOTE: VAULT TOP SLAB IS H-20 OCCASIONAL TRAFFIC LOADED



PROFILE  
4" 577 VALVE VAULT  
WITH PUMPING  
PORT  
SCALE: 1/4" = 1'-0"

LEVEL ELEVATION	DISTANCE BETWEEN POINTS	SET POINT DESCRIPTION
612.30		SEWER INVERT IN
	5.00	STORAGE VOLUME FOR 20 MIN RESERVE
607.30		HIGH LEVEL ALARM
	0.50	SENSOR SPACING
606.80		LAG PUMP START
	0.50	SENSOR SPACING
606.30		LEAD PUMP START
	1.50	SENSOR SPACING
604.80		PUMPS STOP
	2.71	DISTANCE
602.09		FLOOR



PROFILE  
6' DIAMETER WETWELL  
SCALE: 1/2" = 1'-0"

NOTE:  
ALL MATERIALS SHOWN ON THIS SHEET WILL BE SUPPLIED BY ROMTEC UTILITIES AND DELIVERED TO THE SITE AFTER THE HOLE HAS BEEN EXCAVATED AND SHORED. THE CONTRACTOR WILL SUPPLY A CRANE OF SUFFICIENT SIZE TO LOWER ALL THE CONCRETE PIECES INTO THE HOLE SAFELY. THE CONTRACTOR WILL INSTALL THE WET WELL, VALVE VAULT AND METERING VAULT. ROMTEC UTILITIES WILL PROVIDE A REPRESENTATIVE FOR TECHNICAL ASSISTANCE ON THE DAY OF INSTALLATION TO ANSWER ANY QUESTIONS THAT MAY ARISE. THE CONTRACTOR IS RESPONSIBLE FOR ALL PLUMBING AND ELECTRICAL CONNECTIONS AND INSTALLATION. ITEMS NOTED AS "(BY OTHERS)" WILL BE PROVIDED AND INSTALLED BY THE CONTRACTOR. ROMTEC UTILITIES WILL NOT INSTALL ANY OF THE COMPONENTS SHOWN ON THIS PAGE.

- SUBMERSIBLE NON-CLOG SEWAGE PUMPS, FLYGT MODEL NP-3153 (274). PROVIDE ONE PUMP WITH MIX FLUSH VALVE.
- 3-INCH FLYGT DISCHARGE ELBOW.
- 4" STAINLESS STEEL DISCHARGE PIPING (SCHED 40) WITH 4" X 3" ECCENTRIC REDUCER FACTORY TESTED. PROVIDE ALL PIPE PENETRATION(S) WITH RUBBER BOOTS (KOR-N-SEAL).
- STAINLESS STEEL DISCHARGE PIPE ANCHOR BRACKET.
- DI SLEEVE COUPLING, STAINLESS STEEL TO DI PIPING
- TWO 2-INCH SCHEDULE 40 STAINLESS STEEL GUIDE BARS FOR EACH PUMP (FULL HEIGHT). ATTACH TO HATCH UNI-STRUT WITH FLYGT UPPER GUIDE BAR BRACKET.
- PUMP POWER CABLE WITH QUICK CONNECT COUPLING AT PUMP DISCONNECT PANEL. PROVIDE EACH CABLE WITH A STAINLESS STEEL BASKET CABLE GRIP ATTACHED TO HOOK ON UPPER GUIDE BAR BRACKET.
- STAINLESS STEEL CHAIN SLING FOR PUMP RETRIEVAL USING FLYGT GRIP-EYE. ATTACH TO PUMP LIFTING HANDLE.
- 1/4" STAINLESS STEEL CHAIN (S-4 ATTACHED TO PUMP HANDLE. PROVIDE CHAIN WITH 3/8" & 1/2" STAINLESS STEEL BOW SHACKLE WITH SCREW PIN ATTACHED TO PUMP HANDLE. ATTACH UPPER END OF CHAIN TO HOOK ON UPPER GUIDE BAR BRACKET.
- WETWELL SEAL, KOR-N-SEAL.
- PUMP LIQUID LEVEL CONTROL PROBE, FLYGT MULTI-TRODE PROBE. PROBE LENGTH = 5 FEET (1.5 METERS) NUMBER OF SENSORS = 10 SENSOR SPACING = 6-INCHES. PROVIDE MULTITRODE MTAK-1 PROBE MOUNTING BRACKET MOUNTED TO HATCH UNI-STRUT.
- REDUNDANT CONTROL SYSTEM. CUSTOM MULTI-TRODE 3 SENSOR PROBE FOR REDUNDANT HIGH LEVEL ALARM AND PUMP START COMMAND.
- NOT USED.
- HDPE INFLUENT DEFLECTOR WITH FULL SIZE INSPECTION HOLE AND GUILLOTINE COVER.
- 1/8" STAINLESS STEEL LIFTING CABLE FOR INFLUENT DEFLECTOR INSPECTION HOLE COVER. PERMANENTLY ATTACH UPPER END OF CABLE TO HATCH UNI-STRUT.
- FLYGT ALUMINUM ACCESS HATCH PRECAST INTO WETWELL TOP SLAB. PROVIDE WITH SAFE-HATCH SAFETY GRATE BY FLYGT. FLED-HD-33-5X44A0SH
- ALUMINUM CABLE HATCH AND WETWELL VENT PRECAST INTO WETWELL TOP SLAB. PROVIDE WITH STAINLESS STEEL HINGES AND SLAM-LOCK.
- STAINLESS STEEL ANCHOR INSERTS FOR PUMP DISCONNECT PANEL.
- STAINLESS STEEL ANCHOR INSERTS FOR PUMP DAVIT CRANE BASE.
- NOT USED.

UPON SUCCESSFUL INSTALLATION OF THE WET WELL, THE CONTRACTOR SHALL HAVE THE INTERIOR COATED WITH 5 MILS D.F.T. OF RAVEN A-10 PRIMER AND 80 - 100 MILS D.F.T. OF RAVEN 405. THE CONTRACTOR SHALL PROVIDE WRITTEN PROOF OF THE WET WELL CASTING DATE TO VERIFY THAT THE CONCRETE HAS CURED ADEQUATELY TO SAFELY APPLY THE COATINGS. (THIS ITEM IS NOT SUPPLIED BY ROMTEC UTILITIES, IT IS CONTRACTOR SUPPLIED AND INSTALLED)

VERIFY SCALE  
BAR IS ONE INCH ON ORIGINAL DRAWING  
IF NOT ONE INCH ON SCALES ACCORDINGLY

ROMTEC UTILITIES  
18240 NORTH BANK ROAD  
ROSEBURG, OR 97470  
(541)-496-9678  
FAX (541)-496-0804

6' WETWELL  
4" DISCHARGE & VAULT

SHEET  
1 OF  
JOB NUMBER  
RMTc 0000

NO. DATE DESCRIPTION REVISIONS

