



Tech notes

January 2005



Pre-engineered Package Lift Stations for Wastewater and Stormwater

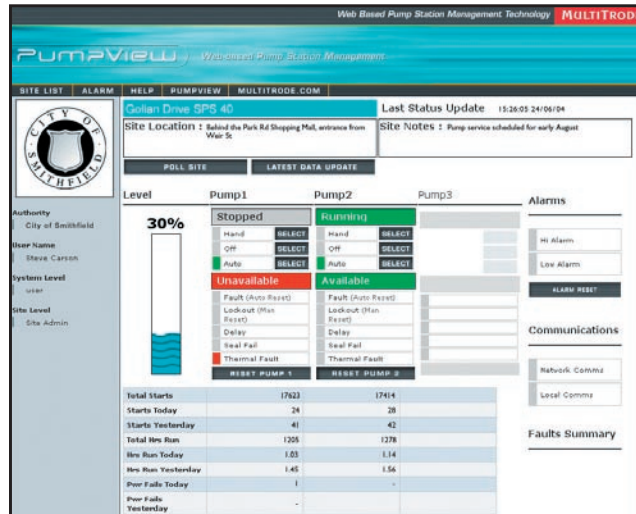
Product Information & Updates • Installation & Technical Tips

THIS EDITION OF

TECH NOTES examines MultiTrode Inc.'s new PumpView product, available from Romtec Utilities as an optional component of its pre-engineered package submersible lift station. Romtec Utilities provides complete lift stations that fit any need - from basic systems that offer on-site control, to full-featured systems with sophisticated SCADA functionality. PumpView is a cutting-edge, Web-based pump control system that enables remote control and monitoring via the Internet. MultiTrode's PumpView allows users to monitor lift stations and make changes easily from any location, providing greater flexibility and more information while reducing the number of man-hours and travel time.



Romtec Utilities is a dedicated integrator of submersible pumps and lift station equipment manufactured by ITT Flygt.



PumpView hardware at the site, in conjunction with the Web-based service, enables control and monitoring via the Internet.

PumpView is a Web-based pump station management system that allows users to remotely monitor and control lift station networks. Alarms are transmitted via e-mail or cellular text messaging; a Web interface illustrates problem areas in the network; and PumpView software then allows users to solve the problem. The only IT infrastructure needed is a Web browser (Internet Explorer or Netscape) and an Internet connection.

The system

PumpView hardware is installed in the panel with the MultiTrode MT2PC family (or the MT2PC plus MonitorPro, which provides on-site supervisory

control).

The hardware connects to the pump controller or MonitorPro via a serial connection, sending regular status information and alarm information via the cellular data network to a secure MultiTrode-managed Web server.

The Web server stores all of the information in a database. When required, the Web server sends out alarm notifications. Users

can log in to Web pages at any time to view the status of their entire network, as well as see detailed status for any pump station. The software allows users to clear alarms, reset pumps or change individual pump status from auto to hand or off.

Data is stored on secure servers and is only available through password access to secure Web pages. During transmission, data is encrypted to ensure complete security at all times.

The functionality

PumpView offers a three-step solution that features the latest technology in



The MultiTrode-managed infrastructure offers reliable and secure servers that are monitored 24 hours a day.

ROMTEC UTILITIES

18240 North Bank Rd., Roseburg, OR 97470

541.496.3541 • info@romtecutilities.com •

www.romtecutilities.com



Tech notes

Product Information & Updates • Installation & Technical Tips



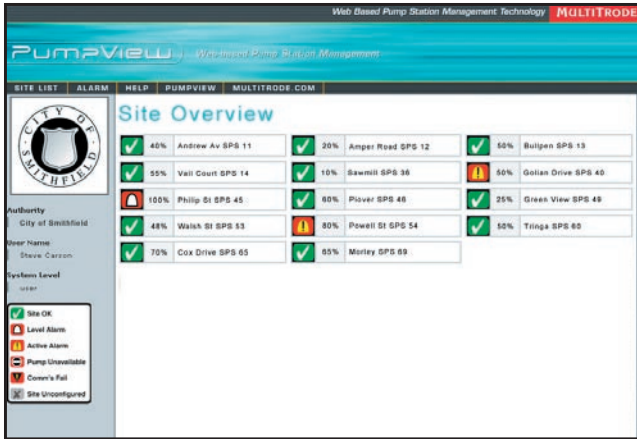
ROMTEC UTILITIES

18240 North Bank Rd., Roseburg, OR 97470

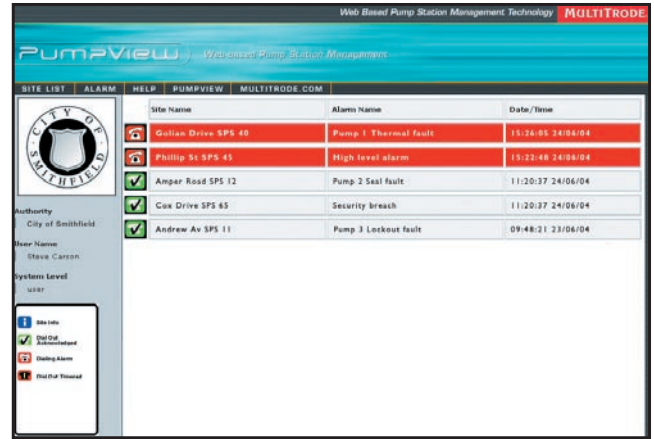
• 541.496.3541 • info@romtecutilities.com •

www.romtecutilities.com

**Pre-engineered Package Lift Stations
for Wastewater and Stormwater**



The Site Overview screen displays the alarm status and level at a glance for all sites.

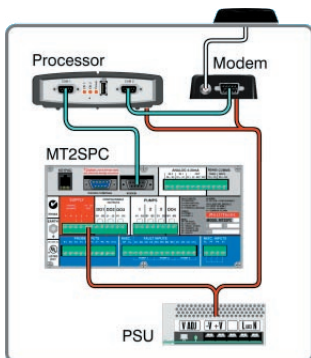


The Site Alarm screen displays details of trouble areas on the lift station network.

pump station monitoring and control:

Step One - As soon as a problem occurs, PumpView sends specific alarm notification via e-mail or mobile phone SMS (short messaging service) to each user on the alarm list in turn, until the alarm is acknowledged via the Web or by phone text messaging.

Step Two - PumpView



Hardware installation is easy: simply connect the MT2PC/MT3PC to the PumpView processor unit with the provided serial cable, and then connect the processor unit to the modem.

helps users identify the problem by generating Web pages that graphically illustrate pump status. Alarms are highlighted so you can check pump station levels, find out which pumps are down and which pumps are still available, and quickly identify the problem.

Step Three - PumpView then allows users to clear the alarms, reset pumps or change individual pump status from auto to hand or off. Users can check well levels, view fault status, reset pumps and alarms and view historical data.

The out-sourcing advantage

Site visits take time and cost money. With MultiTrode's remote, Web-based solution, municipalities can cut man-hours and trim travel time.

Besides the direct opera-

tional benefits, PumpView also eliminates many of the technological hassles of running a system. By out-sourcing pump control system support, municipalities eliminate capital investment in expensive servers, software, upgrades, training, documentation and support. Cities do not have to install software, train personnel or hire system integrators to write programming code - PumpView takes care of all that.

The Web servers, which are monitored 24 hours a day, are backed up and hosted by one of the most secure hosting services in the world. Service management and data transmission costs are all included in the monitoring fee.

Users also benefit from the continual upgrade and improvement to all Multi-

Trode solutions that support Romtec Utilities' pre-engineered package lift stations.

FOR MORE INFORMATION:

The MultiTrode PumpView system comes pre-packaged and easy to install, like all of the components of Romtec Utilities' pre-engineered lift station systems. Romtec Utilities' lift stations feature components by the best companies in the business, including MultiTrode, Inc., ITT Flygt strategic partner and an innovator of pump station management systems. The control panels offered by Romtec Utilities as part of its turnkey submersible lift station system are fully assembled and simple to install, use and maintain. For more information, call Romtec Utilities at 541-496-3541 or visit www.romtecutilities.com.